

## Airport Advisory Commission

**Gerald Mineghino**  
Chair

**Karen Sherman**  
Vice Chair

**Jeffrey Anderson**

**Wayne Chaney Sr.**

**Elizabeth Cruz**

**Hal Gosling**

**Glenn Ray**

**Jeff Rowe**

**Roland B. Scott, Jr.**

## Airport Management

**Juan López-Rios**  
Interim Airport Director

**Ken Mason**  
Executive Assistant

**Carolyn Carlton-Lowe**  
Operations & Facilities  
Bureau Manager

**Claudia Lewis**  
Manager of Administration  
& Finance

**Dale Worsham**  
Administrative Officer

**Fred Pena**  
Facilities Management Officer

**Karl Zittel**  
Airside Operations Officer

**Drew Schneider**  
Manager of Airport Security

**Stephanie Montuya-Morisky**  
Acting Public Affairs Officer

**Ron Reeves**  
Noise & Environmental Affairs Officer



**long beach**  
airport



# Long Beach Airport Monthly Noise Report February 2016

**COMMERCIAL AIRCRAFT LATE NIGHT ACTIVITY**  
**LGB Current Month & Calendar Year-To-Date Statistics (10 PM- 7AM)**  
**February 2016**

				February			CY-T-D 2016		
10PM - 11PM Activity	2016	2015	Change	2016	2015	Change			
<b>Air Carrier &amp; Commuter Operations</b>	<b>1,776</b>	<b>1,697</b>	<b>4.7%</b>	<b>3,639</b>	<b>3,619</b>	<b>0.6%</b>			
Alaska/Horizon	0	0		0	0				
American	1	1	0.0%	3	3	0.0%			
Delta/Skywest	3	0	300.0%	3	0	300.0%			
FedEx	0	0		0	0				
JetBlue Airways	31	18	72.2%	58	24	141.7%			
UPS	0	0		0	0				
<b>Subtotal 10PM-11PM</b>	<b>35</b>	<b>19</b>	<b>84.2%</b>	<b>64</b>	<b>27</b>	<b>137.0%</b>			
11PM- 7AM Activity	2016	2015	Change	2016	2015	Change			
Alaska/Horizon	0	0		0	0				
American	0	1	-100.0%	2	3	-33.3%			
Delta/Skywest	1	0	100.0%	1	0	100.0%			
FedEx	0	0		0	0				
JetBlue	15	9	66.7%	28	12	133.3%			
UPS	0	0		0	0				
<b>Subtotal 11PM-7AM</b>	<b>16</b>	<b>10</b>	<b>60.0%</b>	<b>31</b>	<b>15</b>	<b>106.7%</b>			
<b>TOTAL</b>	<b>51</b>	<b>29</b>	<b>75.9%</b>	<b>95</b>	<b>42</b>	<b>126.2%</b>			

Notes:

3.0% (51 of 1,776) of total commercial operations occurred between 10pm - 7am.

1.8 flights - Nightly average for all late night (10:00 PM—7:00 AM) commercial flights, includes unanticipated delays.

0.6 flights - Nightly average for commercial flights after 11 PM.

# AIRPORT OPERATIONS & AIRCRAFT NOISE VIOLATIONS

## LGB Current Month & Calendar Year-To-Date Statistics

### February 2016

February				CY-T-D 2016		
<b>Air Carrier Noise Violations</b>	<b>2016</b>	<b>2015</b>	<b>Change</b>	<b>2016</b>	<b>2015</b>	<b>Change</b>
Alaska/Horizon	0	0		0	0	
American	0	0		0	1	-100.0%
Delta/SkyWest	0	0		0	0	
FedEx	0	0		0	0	
JetBlue	14	7	100.0%	26	9	188.9%
UPS	0	0		0	0	
<b>Subtotal</b>	<b>14</b>	<b>7</b>	<b>100.0%</b>	<b>26</b>	<b>10</b>	<b>160.0%</b>
<b>Commuter Noise Violations</b>	<b>2016</b>	<b>2015</b>	<b>Change</b>	<b>2016</b>	<b>2015</b>	<b>Change</b>
Alaska/Horizon	0	0		0	0	
American	1	0	100.0%	1	0	100.0%
Delta/SkyWest	0	0		0	0	
<b>Subtotal</b>	<b>1</b>	<b>0</b>	<b>100.0%</b>	<b>1</b>	<b>0</b>	<b>100.0%</b>
<b>Non-Commercial Noise Violations</b>	<b>2016</b>	<b>2015</b>	<b>Change</b>	<b>2016</b>	<b>2015</b>	<b>Change</b>
All GA, Charter & Other	9	19	-52.6%	25	36	-30.6%
<b>TOTAL</b>	<b>24</b>	<b>26</b>	<b>-7.7%</b>	<b>52</b>	<b>46</b>	<b>13.0%</b>
<b>Monetary Fines</b>						
Airport Surcharges	\$900	\$1,300		\$1,700	\$2,500	
Consent Decree	\$84,000	\$24,000		\$138,000	\$30,000	
<b>TOTAL</b>	<b>\$84,900</b>	<b>\$25,300</b>		<b>\$139,700</b>	<b>\$32,500</b>	
<b>Airport Operations (FAA)</b>	<b>2016</b>	<b>2015</b>	<b>Change</b>	<b>2016</b>	<b>2015</b>	<b>Change</b>
Air Carrier + Commuter Carriers	1,776	1,697	4.7%	3,639	3,619	0.6%
Air Taxi + General Aviation	22,888	20,410	12.1%	45,000	42,446	6.0%
Military Operations	106	215	-50.7%	212	381	-44.4%
<b>Total Aircraft Operations</b>	<b>24,770</b>	<b>22,322</b>	<b>11.0%</b>	<b>48,851</b>	<b>46,446</b>	<b>5.2%</b>

Notes:

0.1% (24 of 24,770) of the Airport's total aircraft operations (Commercial & GA) resulted in an aircraft noise violation.

0.9% (15 of 1,776) the Airports Commercial operations (Commercial & Commuter) resulted in an aircraft noise violation.

# AIRCRAFT NOISE VIOLATORS

## February 2016

OWNERNAME	DATE	TIME	A/D	RWY	A/C TYPE	SEL	LIMIT	STATUS
LG Electronics	2/4/2016	1:13:59	D	30	G550	93.6	79.0	VIO
LB Twinstar LLC	2/4/2016	23:11:20	A	30	DA42	82	79.0	VIO
Paradigm Air Carriers Inc.	2/4/2016	23:24:25	A	30	B734	95.4	79.0	VIO
Wing Aviation Charter Services LLC	2/5/2016	2:50:04	A	30	H25B	89.1	79.0	VIO
JetBlue Airways Corporation	2/5/2016	23:08:47	D	12	A320	87.1	79.0	VIO + Alt Enf
Paradigm Air Carriers Inc.	2/5/2016	23:14:42	D	12	B734	94	79.0	VIO
JetBlue Airways Corporation	2/6/2016	0:25:38	A	30	A320	91.5	79.0	VIO + Alt Enf
WAC Charter Inc.	2/6/2016	23:26:32	D	30	E505	81.9	79.0	VIO
Lobo Aviation 2 LLC	2/7/2016	23:21:35	A	30	GALX	87.9	79.0	VIO
PS Aviation LLC	2/7/2016	23:29:08	A	30	WW24	90.5	79.0	VIO
JetBlue Airways Corporation	2/14/2016	1:13:02	A	30	A320	n/a	79.0	VIO + Alt Enf
JetBlue Airways Corporation	2/14/2016	2:02:38	D	30	A320	86.4	79.0	VIO + Alt Enf
JetBlue Airways Corporation	2/14/2016	4:01:34	A	30	A321	n/a	79.0	VIO + Alt Enf
JetBlue Airways Corporation	2/14/2016	23:20:08	D	30	A320	87	79.0	VIO + Alt Enf
JetBlue Airways Corporation	2/14/2016	23:42:56	D	30	A320	94	79.0	VIO + Alt Enf
JetBlue Airways Corporation	2/16/2016	4:03:53	A	30	A320	n/a	79.0	VIO + Alt Enf
BIZAV Support LLC	2/16/2016	5:21:58	D	30	LJ60	86.6	79.0	VIO
JetBlue Airways Corporation	2/16/2016	23:09:01	D	30	A320	88.2	79.0	VIO + Alt Enf
JetBlue Airways Corporation	2/18/2016	3:19:02	A	30	A320	n/a	79.0	VIO + Alt Enf
JetBlue Airways Corporation	2/19/2016	1:00:43	D	30	A320	94.3	79.0	VIO + Alt Enf
JetBlue Airways Corporation	2/19/2016	23:40:47	A	30	A320	93	79.0	VIO + Alt Enf
Delta Air Lines / SkyWest Airlines	2/19/2016	23:52:33	A	30	CRJ7	90.6	79.0	VIO
JetBlue Airways Corporation	2/20/2016	0:18:24	D	30	A320	96.2	79.0	VIO + Alt Enf
JetBlue Airways Corporation	2/20/2016	1:04:25	D	30	A320	90.6	79.0	VIO + Alt Enf

**DEFINITIONS:**

**A/C Type** — Aircraft Type

**RWY** — Runway

**A/D/G** — Arrival / Departure / Ground Operation

**SEL** — SENEL — Single Event Noise Exposure Level (dBA)

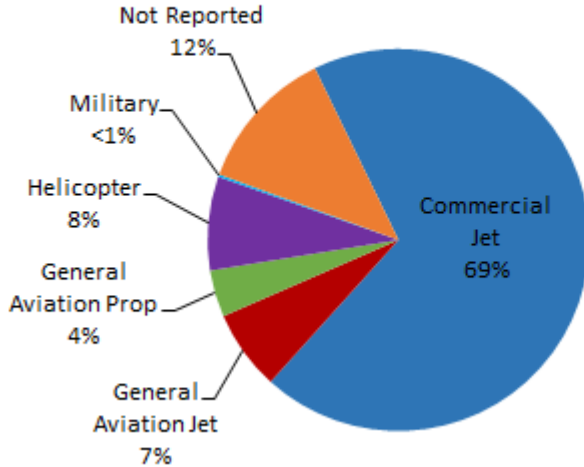
**ALT ENF** — Alternative Enforcement

**VIO** — Violation

# LGB AIRCRAFT NOISE COMPLAINTS

February 2016

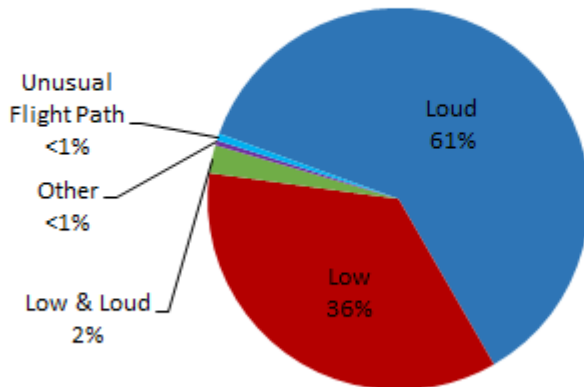
## Complaints by Aircraft Types



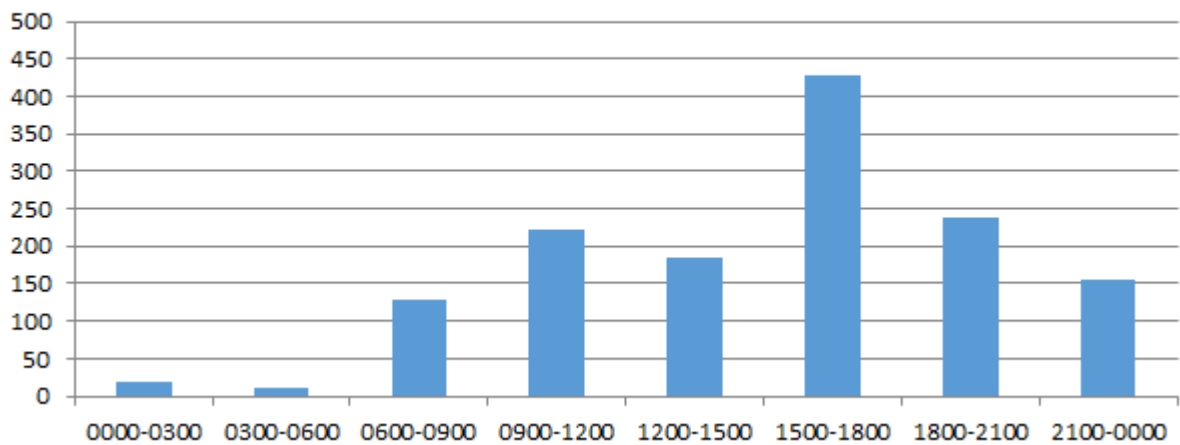
## Complaints by Zip Code

Code	Complaints	Units
90501	1	1
90703	2	1
90712	1	1
90713	5	1
90740	3	3
90755	1	1
90803	28	3
90807	59	12
90808	1	1
90814	1	1
90815	8	5
92612	12	1
92626	551	1
92640	22	1
92646	673	1
92648	1	1
92649	8	1
Not Reported	9	8
<b>Grand Total</b>	<b>1,386</b>	<b>44</b>

## Complaints by Concern



## Complaints by Time





# long beach airport



## Long Beach Airport

4100 E. Donald Douglas Drive, Long Beach, CA 90808

[www.lgb.org](http://www.lgb.org) • [lgbapt@longbeach.gov](mailto:lgbapt@longbeach.gov)

Administration • (562) 570-2619