

## Airport Advisory Commission

**Karen Sherman**  
Chair

**Glenn Ray**  
Vice Chair

**Jeffrey Anderson**

**Wayne Chaney Sr.**

**Elizabeth Cruz**

**Hal Gosling**

**Gerald Mineghino**

**Jeff Rowe**

**Roland B. Scott, Jr.**

## Airport Management

**Juan López-Rios**  
Interim Airport Director

**Ken Mason**  
Executive Assistant

**Carolyn Carlton-Lowe**  
Operations & Facilities  
Bureau Manager

**Claudia Lewis**  
Manager of Administration  
& Finance

**Dale Worsham**  
Administrative Officer

**Fred Pena**  
Facilities Management Officer

**Karl Zittel**  
Airside Operations Officer

**Drew Schneider**  
Manager of Airport Security

**Stephanie Montuya-Morisky**  
Acting Public Affairs Officer

**Ron Reeves**  
Noise & Environmental Affairs Officer



**long beach**  
airport



# Long Beach Airport Monthly Noise Report April 2016

**COMMERCIAL AIRCRAFT LATE NIGHT ACTIVITY**  
**LGB Current Month & Calendar Year-To-Date Statistics (10 PM- 7AM)**  
**April 2016**

<b>April</b>				<b>CY-T-D 2016</b>		
<b>10PM - 11PM Activity</b>	<b>2016</b>	<b>2015</b>	<b>Change</b>	<b>2016</b>	<b>2015</b>	<b>Change</b>
<b>Air Carrier &amp; Commuter Operations</b>	<b>1,923</b>	<b>1,953</b>	<b>-1.5%</b>	<b>7,519</b>	<b>7,531</b>	<b>-0.2%</b>
Alaska/Horizon	0	0		0	0	
American	0	4	-400.0%	4	10	-60.0%
Delta/Skywest	1	1	0.0%	15	2	650.0%
FedEx	0	0		0	0	
JetBlue Airways	21	13	61.5%	107	50	114.0%
UPS	0	0		0	0	
<b>Subtotal 10PM-11PM</b>	<b>22</b>	<b>18</b>	<b>22.2%</b>	<b>126</b>	<b>62</b>	<b>103.2%</b>
<b>11PM- 7AM Activity</b>	<b>2016</b>	<b>2015</b>	<b>Change</b>	<b>2016</b>	<b>2015</b>	<b>Change</b>
Alaska/Horizon	0	0		0	0	
American	1	0	100.0%	14	4	250.0%
Delta/Skywest	0	0		2	0	200.0%
FedEx	0	0		0	0	
JetBlue	5	2	150.0%	55	21	161.9%
UPS	0	0		0	0	
<b>Subtotal 11PM-7AM</b>	<b>6</b>	<b>2</b>	<b>200.0%</b>	<b>71</b>	<b>25</b>	<b>184.0%</b>
<b>TOTAL</b>	<b>28</b>	<b>20</b>	<b>40.0%</b>	<b>197</b>	<b>87</b>	<b>126.4%</b>

Notes:

1.5% (28 of 1,923) of total commercial operations occurred between 10pm - 7am.

0.9 flights - Nightly average for all late night (10:00 PM—7:00 AM) commercial flights, includes unanticipated delays.

0.2 flights - Nightly average for commercial flights after 11 PM.

# AIRPORT OPERATIONS & AIRCRAFT NOISE VIOLATIONS

## LGB Current Month & Calendar Year-To-Date Statistics

### April 2016

April				CY-T-D 2016		
<b>Air Carrier Noise Violations</b>	<b>2016</b>	<b>2015</b>	<b>Change</b>	<b>2016</b>	<b>2015</b>	<b>Change</b>
Alaska/Horizon	0	0		0	0	
American	0	0		0	2	-200.0%
Delta/SkyWest	0	0		3	0	300.0%
FedEx	0	0		0	0	
JetBlue	10	2	400.0%	59	21	181.0%
UPS	0	0		0	2	-200.0%
<b>Subtotal</b>	<b>10</b>	<b>3</b>	<b>233.3%</b>	<b>63</b>	<b>24</b>	<b>162.5%</b>
<b>Commuter Noise Violations</b>	<b>2016</b>	<b>2015</b>	<b>Change</b>	<b>2016</b>	<b>2015</b>	<b>Change</b>
Alaska/Horizon	0	0		0	0	
American	0	0		0	0	
Delta/SkyWest	0	0		1	0	100.0%
<b>Subtotal</b>	<b>0</b>	<b>0</b>		<b>1</b>	<b>0</b>	<b>100.0%</b>
<b>Non-Commercial Noise Violations</b>	<b>2016</b>	<b>2015</b>	<b>Change</b>	<b>2016</b>	<b>2015</b>	<b>Change</b>
All GA, Charter & Other	16	15	6.7%	61	74	27.6%
<b>TOTAL</b>	<b>26</b>	<b>18</b>	<b>44.4%</b>	<b>125</b>	<b>98</b>	<b>27.6</b>
<b>Monetary Fines</b>						
Airport Surcharges	\$2,400	\$400		\$6,600	\$6,200	
Consent Decree	\$15,000	\$6,000		\$273,000	\$78,000	
<b>TOTAL</b>	<b>\$17,400</b>	<b>\$6,400</b>		<b>\$279,600</b>	<b>\$84,200</b>	
<b>Airport Operations (FAA)</b>	<b>2016</b>	<b>2015</b>	<b>Change</b>	<b>2016</b>	<b>2015</b>	<b>Change</b>
Air Carrier + Commuter Carriers	1,923	1,953	-1.5%	7,519	7,531	-0.2%
Air Taxi + General Aviation	22,687	23,399	-3.0%	92,436	88,543	4.4%
Military Operations	160	135	18.5%	579	657	-11.9%
<b>Total Aircraft Operations</b>	<b>24,770</b>	<b>25,487</b>	<b>-2.8%</b>	<b>100,534</b>	<b>96,731</b>	<b>3.9%</b>

Notes:

0.1% (26 of 24,770) of the Airport's total aircraft operations (Commercial & GA) resulted in an aircraft noise violation.

0.5% (10 of 1,923) the Airports Commercial operations (Commercial & Commuter) resulted in an aircraft noise violation.

# AIRCRAFT NOISE VIOLATORS

## April 2016

OWNERNAME	DATE	TIME	A/D	RWY	A/C TYPE	SEL	LIMIT	STATUS
MP Aviation LLC	4/1/2016	18:35:51	D	30	B721	109.4	102.5	VIO
RPS Holdings Inc	4/1/2016	23:06:27	D	30	C525	84.9	79.0	VIO
JetBlue Airways Corporation	4/2/2016	1:24:08	A	30	A320	93.5	79.0	VIO + Alt Enf
Crane Company	4/2/2016	4:00:50	D	30	GLF4	89.5	79.0	VIO
JetBlue Airways Corporation	4/2/2016	22:05:16	A	30	A320	93.8	90.0	VIO
JetBlue Airways Corporation	4/2/2016	22:57:28	D	30	A320	95.2	90.0	VIO
JetBlue Airways Corporation	4/5/2016	1:26:57	A	30	A320	92.6	79.0	VIO + Alt Enf
JetBlue Airways Corporation	4/5/2016	23:15:54	D	30	A320	94.9	79.0	VIO + Alt Enf
California Falcon Aviation Inc	4/5/2016	23:31:35	A	30	PA34	83.2	79.0	VIO
Aviat LLC	4/6/2016	6:23:41	D	30	G150	93.8	90.0	VIO
Western Asset Management Company	4/7/2016	22:09:10	A	30	H25B	92.2	90.0	VIO
JetBlue Airways Corporation	4/9/2016	22:09:11	D	30	A320	94.1	90.0	VIO
JetBlue Airways Corporation	4/10/2016	0:02:07	D	30	A320	89.6	79.0	VIO + Alt Enf
JetBlue Airways Corporation	4/10/2016	22:38:02	D	30	A320	94.7	90.0	VIO
Tesoro Companies Inc.	4/12/2016	23:28:54	A	30	G450	89.6	79.0	VIO
JetBlue Airways Corporation	4/15/2016	22:15:56	A	30	A320	93.5	90.0	VIO
Action Air Express	4/16/2016	0:42:52	A	30	C421	86.7	79.0	VIO
Emerald City Aircraft Leasing Inc	4/16/2016	23:29:57	A	30	R22	86.9	79.0	VIO
JetBlue Airways Corporation	4/19/2016	0:31:50	A	30	A320	90.5	79.0	VIO + Alt Enf
Island Express Holding Corp	4/21/2016	10:10:00	A	25R	S76	91.5	88.0	VIO
Private	4/21/2016	23:39:18	A	30	PA44	81.3	79.0	VIO
Sorbi Aviation Inc	4/22/2016	23:13:12	A	30	BE76	83.9	79.0	VIO
Air Methods Corporation	4/23/2016	23:06:02	A	12	EC135	87.8	79.0	PEND-LIF
Tiny Bubbles Aviation Inc.	4/26/2016	5:35:44	A	30	AS350	87.8	79.0	VIO

# AIRCRAFT NOISE VIOLATORS

## April 2016

OWNERNAME	DATE	TIME	A/D	RWY	A/C TYPE	SEL	LIMIT	STATUS
MP Aviation LLC	4/26/2016	14:02:19	D	30	B721	111.3	102.5	VIO
Dubai Air Wing	4/29/2016	6:21:52	A	30	B737	95.2	79.0	VIO

### DEFINITIONS:

**A/C Type** — Aircraft Type

**A/D/G** — Arrival / Departure / Ground Operation

**ALT ENF** — Alternative Enforcement

**PEND-LIF** — Pending Life-Flight Documents

**RWY** — Runway

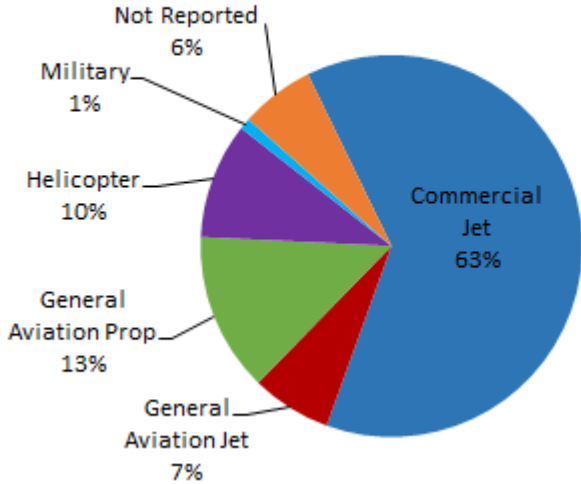
**SEL** — SENEL — Single Event Noise Exposure Level (dBA)

**VIO** — Violation

# LGB AIRCRAFT NOISE COMPLAINTS

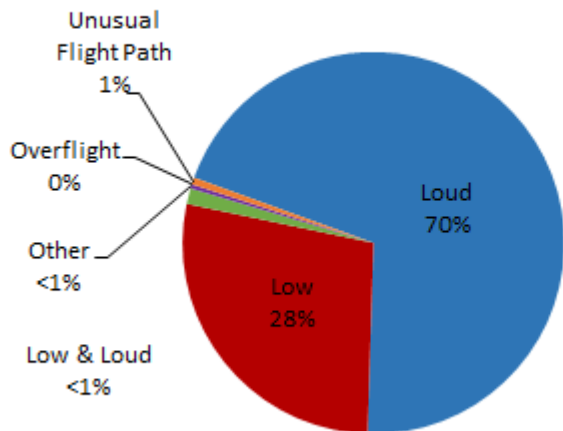
April 2016

## Complaints by Aircraft Types

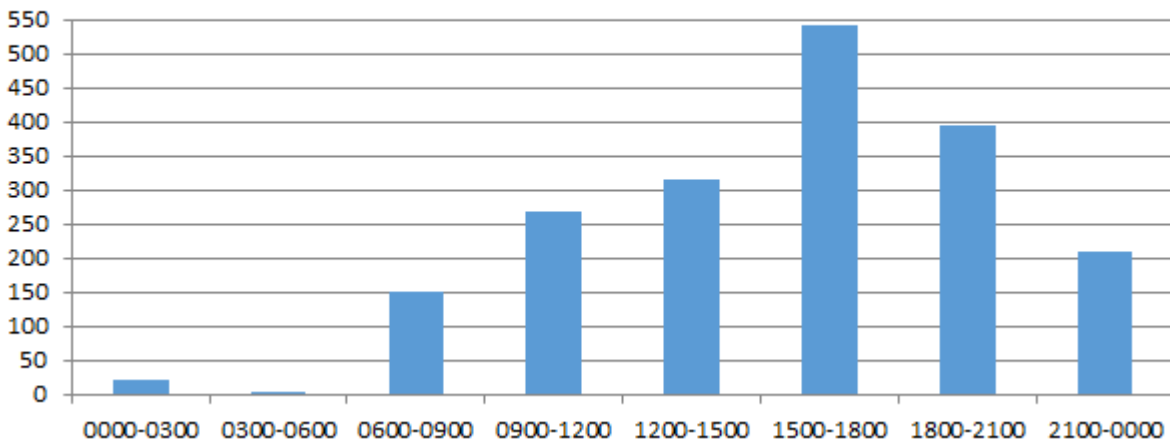


Complaints by Zip Code		
Code	Complaints	Units
90241	1	1
90275	5	1
90501	6	2
90713	2	1
90731	1	1
90740	2	2
90803	17	1
90807	65	13
90808	61	15
90815	7	6
92612	206	1
92626	563	1
92640	9	1
92646	881	1
92648	63	2
92649	3	2
Not Reported	11	11
<b>Grand Total</b>	<b>1,903</b>	<b>62</b>

## Complaints by Concern



## Complaints by Time





# long beach airport



## Long Beach Airport

4100 E. Donald Douglas Drive, Long Beach, CA 90808

[www.lgb.org](http://www.lgb.org) • [lgbapt@longbeach.gov](mailto:lgbapt@longbeach.gov)

Administration • (562) 570-2619