

Airport Advisory Commission

Karen Sherman
Chair

Glenn Ray
Vice Chair

Jeffrey Anderson

Wayne Chaney Sr.

Elizabeth Cruz

Hal Gosling

Gerald Mineghino

Jeff Rowe

Roland B. Scott, Jr.

Airport Management

Juan López-Rios
Interim Airport Director

Ken Mason
Executive Assistant

Carolyn Carlton-Lowe
Operations & Facilities
Bureau Manager

Claudia Lewis
Manager of Administration
& Finance

Dale Worsham
Administrative Officer

Fred Pena
Facilities Management Officer

Karl Zittel
Airside Operations Officer

Drew Schneider
Manager of Airport Security

Stephanie Montuya-Morisky
Acting Public Affairs Officer

Ron Reeves
Noise & Environmental Affairs Officer



long beach
airport



Long Beach Airport Monthly Noise Report May 2016

AIRPORT OPERATIONS & AIRCRAFT NOISE VIOLATIONS

LGB Current Month & Calendar Year-To-Date Statistics

May 2016

	May			CY-T-D 2016		
Air Carrier Noise Violations	2016	2015	Change	2016	2015	Change
Alaska/Horizon	0	0		0	0	
Allegiant	0	0		0	0	
FedEx	0	0		0	0	
Delta/SkyWest	0	0		3	0	300.0%
JetBlue Airways	5	7	-28.6%	64	28	128.6%
UPS	0	0		1	1	0.0%
USA/AWE/AAL*	1	0	100.0%	1	2	-50.0%
Subtotal	6	7	-14.3%	69	31	122.6%
Commuter Noise Violations	2016	2015	Change	2016	2015	Change
Alaska/Horizon	0	0		0	0	
Delta/SkyWest	0	0		1	0	100.0%
USA/AWE/AAL*	0	0		0	0	
Subtotal	0	0	0.0%	1	0	100.0%
Non-Commercial Noise Violations	2016	2015	Change	2016	2015	Change
All GA, Charter & Other	16	20	-20.0%	77	94	-18.1%
TOTAL	22	27	-18.5%	147	125	17.6%
Monetary Fines						
Airport Surcharges	\$1,700	\$1,000		\$8,300	\$7,200	
Consent Decree	\$9,000	\$30,000		\$282,000	\$180,000	
TOTAL	\$10,700	\$31,000		\$290,300	\$115,200	
Airport Operations (FAA)	2016	2015	Change	2016	2015	Change
Air Carrier + Commuter Carriers	2,119	2,079	1.9%	9,638	9,610	0.3%
Air Taxi + General Aviation	25,266	24,385	3.6%	117,702	112,928	4.2%
Military Operations	113	232	-51.3%	692	889	-22.2%
Total Aircraft Operations	27,498	26,696	3.0%	128,032	123,427	3.7%

Notes:

0.1% (22 of 27,498) of the Airport's total aircraft operations (Commercial & GA) resulted in an aircraft noise violation.

0.3% (6 of 2,119) the Airports Commercial operations (Commercial & Commuter) resulted in an aircraft noise violation.

USA— US Airways

AWE— America West

AAL— American Airlines

AIRCRAFT NOISE VIOLATORS

May 2016

OWNERNAME	DATE	TIME	A/D	RWY	A/C TYPE	SEL	LIMIT	STATUS
Athena Group Investors LLC	5/1/2016	5:13:46	D	30	FA50	86.9	79.0	VIO
Private	5/1/2016	7:34:53	D	25R	BE35	94.3	92.0	VIO
Flying Star Inc	5/2/2016	1:32:08	D	30	LJ60	87.5	79.0	VIO
NetJets Inc.	5/4/2016	23:05:25	A	30	GLF5	87.3	79.0	VIO
JetBlue Airways Corporation	5/4/2016	23:38:27	A	30	A320	92.8	79.0	VIO + Alt Enf
JetBlue Airways Corporation	5/5/2016	22:14:40	D	30	A320	95.2	90.0	VIO
Unifying Corp	5/6/2016	3:43:23	A	30	PA31	84.6	79.0	VIO
Terrible Herbst Oil	5/7/2016	23:42:19	A	30	C560	84.5	79.0	VIO
Zephyr Services LLC	5/12/2016	23:05:16	A	30	B350	88.4	79.0	VIO
Clear Aircraft Inc	5/13/2016	5:59:16	D	30	ASTR	98.5	79.0	VIO
Go Far Aviation LLC	5/13/2016	11:06:07	D	25R	C525	94.7	92.0	VIO
JetBlue Airways Corporation	5/14/2016	22:14:23	A	30	A320	93.3	90.0	VIO
N453CJ LLC	5/15/2016	23:30:58	A	30	LJ35	90.6	79.0	PEND-LIF
JetBlue Airways Corporation	5/18/2016	22:12:38	D	30	A320	95.2	90.0	VIO
NHM Aviation Inc	5/18/2016	22:44:43	A	30	FA50	92.2	90.0	VIO
B & B Pipe and Tool Co.	5/20/2016	12:10:07	D	07L	SR22	90.8	88.0	VIO
Testa Construction, Inc.	5/20/2016	13:55:52	D	07L	SR22	90.1	88.0	VIO
Issue V Inc.	5/21/2016	23:25:02	A	30	E55P	89.1	79.0	VIO
Private	5/23/2016	18:32:04	D	07L	VEL	90.5	88.0	VIO
JetBlue Airways Corporation	5/25/2016	23:10:56	A	30	A320	93.3	79.0	VIO + Alt Enf
Air Transport LLC	5/27/2016	9:42:12	D	25R	BE55	95.9	92.0	VIO
American Airlines	5/27/2016	23:11:52	A	30	CRJ9	90.4	79.0	VIO

DEFINITIONS:

A/C Type — Aircraft Type

A/D/G — Arrival / Departure / Ground Operation

ALT ENF — Alternative Enforcement

PEND-LIF — Pending Life-Flight Documentation

RWY — Runway

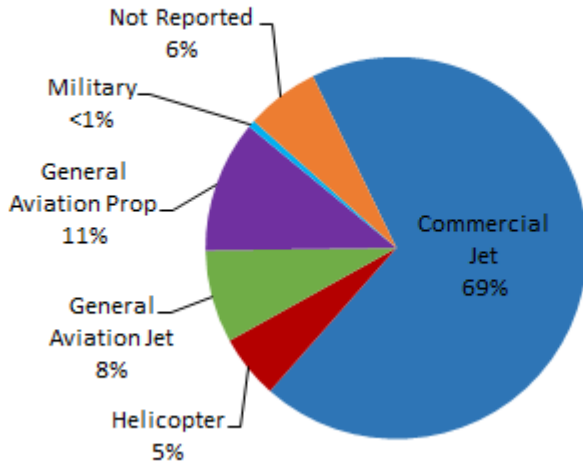
SEL — SENEL — Single Event Noise Exposure Level (dBA)

VIO — Violation

LGB AIRCRAFT NOISE COMPLAINTS

May 2016

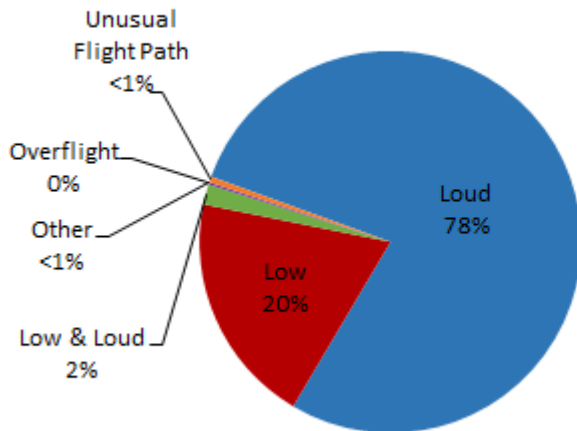
Complaints by Aircraft Types



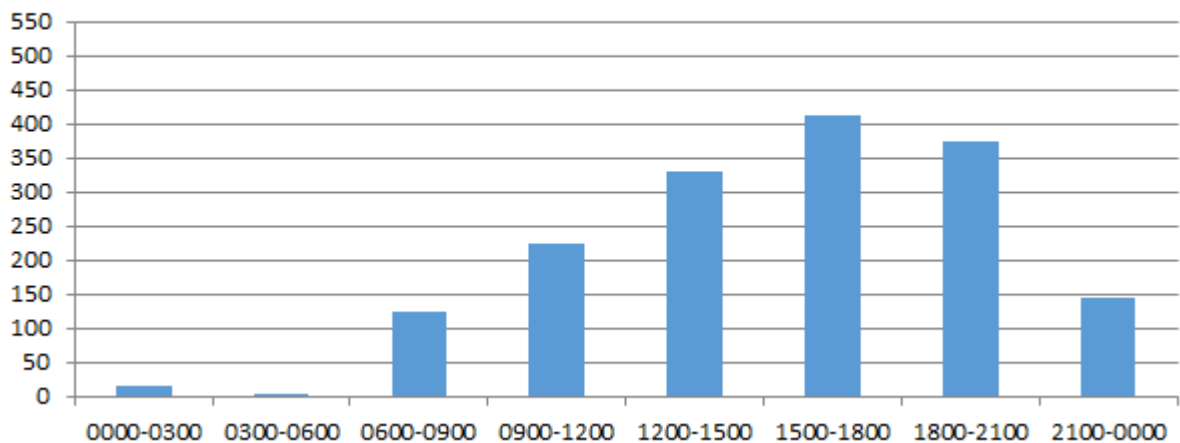
Complaints by Zip Code

Code	Complaints	Units
90241	2	1
90266	1	1
90501	3	2
90712	3	1
90713	2	2
90740	2	2
90803	1	1
90807	46	10
90808	20	2
90810	2	1
90815	6	5
92612	100	1
92626	513	1
92646	787	1
92648	103	2
92649	27	3
92708	1	1
92840	3	1
Not Reported	7	7
Grand Total	1,629	45

Complaints by Concern



Complaints by Time





long beach airport



Long Beach Airport

4100 E. Donald Douglas Drive, Long Beach, CA 90808

www.lgb.org • lgbapt@longbeach.gov

Administration • (562) 570-2619