

Airport Advisory Commission

Karen Sherman
Chair

Glenn Ray
Vice Chair

Jeffrey Anderson

Wayne Chaney Sr.

Elizabeth Cruz

Hal Gosling

Gerald Mineghino

Jeff Rowe

Roland B. Scott, Jr.

Airport Management

Juan López-Rios
Interim Airport Director

Ken Mason
Executive Assistant

Carolyn Carlton-Lowe
Operations & Facilities
Bureau Manager

Claudia Lewis
Manager of Administration
& Finance

Dale Worsham
Administrative Officer

Fred Pena
Facilities Management Officer

Karl Zittel
Airside Operations Officer

Drew Schneider
Manager of Airport Security

Stephanie Montuya-Morisky
Acting Public Affairs Officer

Ron Reeves
Noise & Environmental Affairs Officer



Long Beach Airport Monthly Noise Report June 2016

COMMERCIAL AIRCRAFT LATE NIGHT ACTIVITY
LGB Current Month & Calendar Year-To-Date Statistics (10 PM- 7AM)
June 2016

#	June			CY-T-D 2016		
	2016	2015	Change	2016	2015	Change
10PM - 11PM Activity						
Air Carrier & Commuter Operations	2,339	2,131	9.8%	11,977	11,741	2.0%
Alaska/Horizon	0	0		0	0	
Delta/SkyWest	0	1	-100.0%	16	3	433.3%
FedEx	0	0		0	0	
JetBlue Airways	13	20	-35.0%	130	88	47.7%
Southwest	1	0	100.0%	1	0	100.0%
UPS	0	0		0	0	
US Airways/American Airlines	2	0	200.0%	7	15	-53.3%
Subtotal 10PM-11PM	16	21	-23.8%	154	106	45.3%
11PM- 7AM Activity						
2016	2015	Change	2016	2015	Change	
Alaska/Horizon	0	0		0	0	
Delta/SkyWest	1	0	100.0%	3	0	300.0%
FedEx	0	0		0	0	
JetBlue Airways	7	7	0.0%	64	36	77.8%
Southwest	0	0		0	0	
UPS	0	0		0	0	
US Airways/American Airlines	2	0	200.0%	17	5	240.0%
Subtotal 11PM-7AM	10	7	42.9%	84	41	104.9%
TOTAL	26	28	-7.1%	238	147	61.9%

Notes:

1.1% (26 of 2,339) of total commercial operations occurred between 10pm - 7am.

0.9 flights - Nightly average for all late night (10:00 PM—7:00 AM) commercial flights, includes unanticipated delays.

0.3 flights - Nightly average for commercial flights after 11 PM.

AIRPORT OPERATIONS & AIRCRAFT NOISE VIOLATIONS

LGB Current Month & Calendar Year-To-Date Statistics

June 2016

June				CY-T-D 2016		
Air Carrier Noise Violations	2016	2015	Change	2016	2015	Change
Alaska/Horizon	0	0		0	0	
Delta/SkyWest	1	0	100.0%	4	0	400.0%
FedEx	0	0		0	0	
JetBlue Airways	5	6	-16.7%	69	34	102.9%
Southwest	0	0		0	0	
UPS	0	0		1	1	0.0%
US Airways/American Airlines	1	0	100.0%	2	2	0.0%
Subtotal	7	6	16.7%	76	37	105.4%
Commuter Noise Violations	2016	2015	Change	2016	2015	Change
Alaska/Horizon	0	0		0	0	
Delta/SkyWest	0	0		1	0	100.0%
USA/AAL/Mesa Airlines*	0	0		0	0	
Subtotal	0	0		1	0	100.0%
Non-Commercial Noise Violations	2016	2015	Change	2016	2015	Change
All GA, Charter & Other	17	10	70.0%	94	104	-9.6%
TOTAL	24	16	50.0%	171	141	21.3%
Monetary Fines						
Airport Surcharges	\$1,300	\$100		\$9,600	\$7,300	
Consent Decree	\$30,000	\$36,000		\$312,000	\$144,000	
TOTAL	\$31,300	\$36,100		\$321,600	\$151,300	
Airport Operations (FAA)	2016	2015	Change	2016	2015	Change
Air Carrier + Commuter Carriers	2,339	2,131	9.8%	11,977	11,741	2.0%
Air Taxi + General Aviation	22,810	24,655	-7.5%	140,512	137,583	2.1%
Military Operations	88	164	-46.3%	780	1,053	-25.9%
Total Aircraft Operations	25,237	26,950	-6.4%	153,269	150,377	1.9%

Notes:

0.1% (24 of 25,237) of the Airport's total aircraft operations (Commercial & GA) resulted in an aircraft noise violation.
 0.3% (7 of 2,339) the Airports Commercial operations (Commercial & Commuter) resulted in an aircraft noise violation.

USA— US Airways

AAL— American Airlines

AIRCRAFT NOISE VIOLATORS

June 2016

OWNERNAME	DATE	TIME	A/D	RWY	A/C TYPE	SEL	LIMIT	STATUS
Superior Transportation Associates Inc.	6/2/2016	22:23:45	A	30	C25A	92.9	90.0	VIO
Flexjet, LLC	6/4/2016	5:25:45	D	30	CL30	87.7	79.0	VIO
Private	6/5/2016	15:40:16	D	25R	BE35	96.8	92.0	VIO
Latitude 33 Aviation LLC	6/5/2016	23:18:17	A	30	C25B	87.8	79.0	VIO
JetBlue Airways Corporation	6/6/2016	0:34:31	A	30	A320	93.9	79.0	VIO + Alt Enf
Casey Company	6/7/2016	0:10:29	D	30	C56X	81.9	79.0	VIO
Videotape Center	6/7/2016	0:39:43	A	30	BE36	85	79.0	VIO
JetBlue Airways Corporation	6/10/2016	0:17:10	A	30	A320	93.1	79.0	VIO + Alt Enf
JetBlue Airways Corporation	6/10/2016	23:23:51	D	30	A320	94.3	79.0	VIO + Alt Enf
American Airlines	6/11/2016	23:35:54	A	30	CRJ9	90	79.0	VIO
Private	6/12/2016	23:27:54	A	30	PA44	82.4	79.0	VIO
WLC L.L.C.	6/13/2016	6:19:07	D	30	BE40	96.2	90.0	VIO
L.M.I. II LLC	6/14/2016	1:11:01	A	30	GLEK	88.2	79.0	VIO
Chandelle LLC	6/14/2016	18:45:07	D	25R	VEL	94.3	92.0	VIO
Delta Air Lines / SkyWest Airlines	6/14/2016	23:14:19	A	30	CRJ9	89.4	79.0	VIO
Private	6/17/2016	0:26:06	A	30	PA44	81.8	79.0	VIO
Paragon Aviation LLC	6/21/2016	18:29:22	D	07L	COL4	90.8	88.0	VIO
Private	6/23/2016	23:50:24	A	30	PA44	82.4	79.0	VIO
Private	6/24/2016	23:08:33	A	30	C206	81.9	79.0	VIO
JetBlue Airways Corporation	6/25/2016	0:56:00	A	30	A320	92.7	79.0	VIO + Alt Enf
Maran Desarrollos S.A. de C.V.	6/25/2016	23:28:40	D	30	C525	82.1	79.0	VIO
Buzzard Aviation, LLC	6/27/2016	0:29:35	A	30	C510	86.5	79.0	VIO
Evergreen Empire LLC	6/28/2016	0:21:47	D	30	E55P	81.4	79.0	VIO
JetBlue Airways Corporation	6/28/2016	23:37:47	A	30	A320	92.9	79.0	VIO + Alt Enf

DEFINITIONS:

A/C Type — Aircraft Type

RWY — Runway

A/D/G — Arrival / Departure / Ground Operation

SEL — SENEL — Single Event Noise Exposure Level (dBA)

ALT ENF — Alternative Enforcement

VIO — Violation

AIR CARRIER NOISE BUDGET PERFORMANCE

July 2015 - June 2016

RMT #	NOISE BUDGET	ACTUAL	PERCENT BUDGET USED
9	70.7	43.2	61%
10	84.6	51.2	61%

DEFINITIONS:

RMT — Remote Monitoring Terminal

TOTAL NOISE BUDGET PERFORMANCE

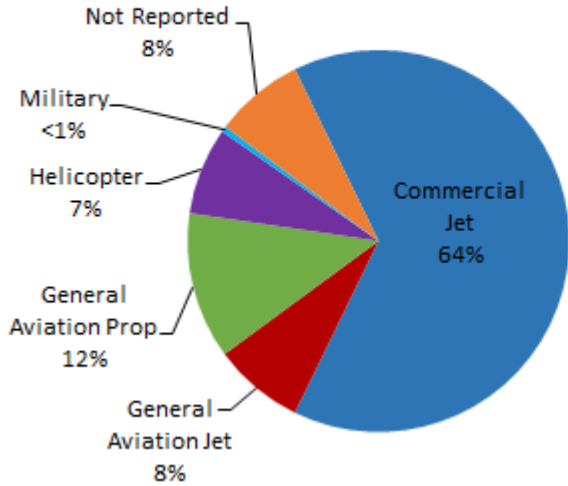
July 2015 - June 2016

RMT #	NOISE BUDGET	ACTUAL	PERCENT BUDGET USED
9	102.7	54.8	53%
10	120.9	67.3	56%

LGB AIRCRAFT NOISE COMPLAINTS

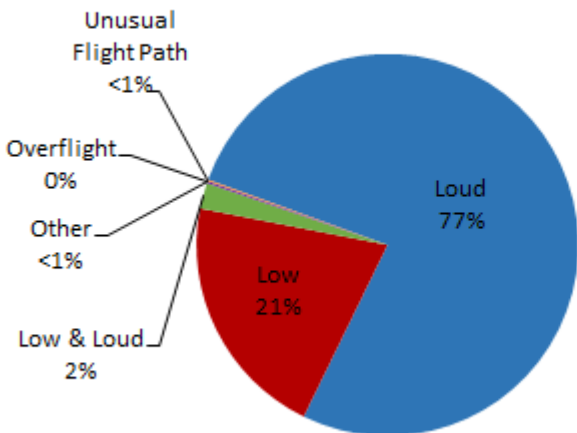
June 2016

Complaints by Aircraft Types

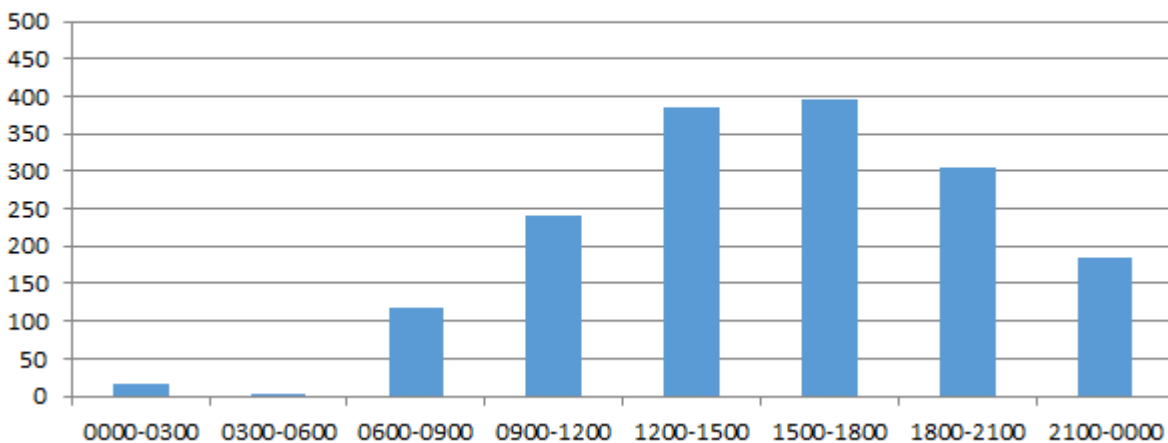


Complaints by Zip Code		
Code	Complaints	Units
90013	30	1
90241	17	1
90501	3	2
90503	1	1
90712	1	1
90713	2	1
90740	2	2
90803	1	1
90805	1	1
90807	58	11
90808	4	2
90814	1	1
90815	2	2
92612	168	1
92626	473	2
92646	807	1
92648	50	2
92649	30	4
Grand Total	1,651	37

Complaints by Concern



Complaints by Time





long beach airport



Long Beach Airport

4100 E. Donald Douglas Drive, Long Beach, CA 90808

www.lgb.org • lgbapt@longbeach.gov

Administration • (562) 570-2619