

Airport Advisory Commission

Karen Sherman
Chair

Glenn Ray
Vice Chair

Jeffrey Anderson

Wayne Chaney Sr.

Elizabeth Cruz

Hal Gosling

Gerald Mineghino

Jeff Rowe

Roland B. Scott, Jr.

Airport Management

Juan López-Rios
Interim Airport Director

Ken Mason
Executive Assistant

Carolyn Carlton-Lowe
Operations & Facilities
Bureau Manager

Claudia Lewis
Manager of Administration
& Finance

Dale Worsham
Administrative Officer

Fred Pena
Facilities Management Officer

Karl Zittel
Airside Operations Officer

Drew Schneider
Manager of Airport Security

Stephanie Montuya-Morisky
Acting Public Affairs Officer

Ron Reeves
Noise & Environmental Affairs Officer



Long Beach Airport Monthly Noise Report July 2016

COMMERCIAL AIRCRAFT LATE NIGHT ACTIVITY
LGB Current Month & Calendar Year-To-Date Statistics (10 PM- 7AM)
July 2016

#	July			CY-T-D 2016		
	2016	2015	Change	2016	2015	Change
10PM - 11PM Activity						
Air Carrier & Commuter Operations	2,419	2,266	6.8%	14,396	14,007	2.8%
Alaska/Horizon	0	0		0	0	
Delta/SkyWest	0	1	-100.0%	16	4	300.0%
FedEx	0	0		0	0	
JetBlue Airways	22	21	4.8%	152	109	39.4%
Southwest	0	0		1	0	100.0%
UPS	0	0		0	0	
US Airways/American Airlines	4	5	-20.0%	11	20	-45.0%
Subtotal 10PM-11PM	26	27	-3.7%	180	133	35.3%
11PM- 7AM Activity						
2016	2015	Change	2016	2015	Change	
Alaska/Horizon	0	0		0	0	
Delta/SkyWest	0	1	-100.0%	3	1	200.0%
FedEx	0	0		0	0	
JetBlue Airways	13	3	333.3%	77	39	97.4%
Southwest	0	0		0	0	
UPS	0	0		0	0	
US Airways/American Airlines	3	2	50.0%	20	7	185.7%
Subtotal 11PM-7AM	16	6	166.7%	100	47	112.8%
TOTAL	42	33	27.3%	280	180	55.6%

Notes:

1.7% (42 of 2,419) of total commercial operations occurred between 10pm - 7am.

1.4 flights - Nightly average for all late night (10:00 PM—7:00 AM) commercial flights, includes unanticipated delays.

0.5 flights - Nightly average for commercial flights after 11 PM.

AIRPORT OPERATIONS & AIRCRAFT NOISE VIOLATIONS

LGB Current Month & Calendar Year-To-Date Statistics

July 2016

July				CY-T-D 2016		
Air Carrier Noise Violations	2016	2015	Change	2016	2015	Change
Alaska/Horizon	0	0		0	0	
Delta/SkyWest	0	0		4	0	400.0%
FedEx	0	0		0	0	
JetBlue Airways	11	2	450.0%	80	36	122.2%
Southwest	0	0		0	0	
UPS	0	0		1	1	0.0%
US Airways/American Airlines	2	2	0.0%	4	4	0.0%
Subtotal	13	4	225.0%	89	41	117.1%
Commuter Noise Violations	2016	2015	Change	2016	2015	Change
Alaska/Horizon	0	0		0	0	
Delta/SkyWest	0	1	-100.0%	1	1	0.0%
USA/AAL/Mesa Airlines*	0	0		0	0	
Subtotal	0	1	-100.0%	1	1	0.0%
Non-Commercial Noise Violations	2016	2015	Change	2016	2015	Change
All GA, Charter & Other	13	13	0.0%	107	117	-8.5%
TOTAL	26	18	44.4%	197	159	23.9%
Monetary Fines						
Airport Surcharges	\$1,600	\$1,700		\$11,200	\$9,000	
Consent Decree	\$48,000	\$3,000		\$360,000	\$147,000	
TOTAL	\$49,600	\$4,700		\$371,200	\$156,000	
Airport Operations (FAA)	2016	2015	Change	2016	2015	Change
Air Carrier + Commuter Carriers	2,419	2,266	6.8%	14,396	14,007	2.8%
Air Taxi + General Aviation	26,069	27,289	-4.5%	166,581	164,872	1.0%
Military Operations	76	228	-66.7%	856	1,281	-33.2%
Total Aircraft Operations	28,564	29,783	-4.1%	181,833	180,160	0.9%

Notes:

0.1% (26 of 28,564) of the Airport's total aircraft operations (Commercial & GA) resulted in an aircraft noise violation.

0.5% (13 of 2,419) the Airports Commercial operations (Commercial & Commuter) resulted in an aircraft noise violation.

USA— US Airways

AAL— American Airlines

AIRCRAFT NOISE VIOLATORS

July 2016

OWNERNAME	DATE	TIME	A/D	RWY	A/C TYPE	SEL	LIMIT	STATUS
JetBlue Airways Corporation	7/1/2016	2:38:04	A	30	A320	92.3	79.0	VIO + Alt Enf
Terrible Herbst Oil	7/2/2016	0:12:43	A	30	C560	89.2	79.0	VIO
Conquest Property LLC	7/5/2016	4:26:10	A	30	BE20	90.8	79.0	VIO
American Airlines	7/9/2016	23:48:33	A	30	CRJ9	91.1	79.0	VIO
Terrible Herbst Oil	7/10/2016	2:19:20	A	30	C560	84.4	79.0	VIO
Private	7/13/2016	0:13:42	A	30	PA44	81.6	79.0	VIO
CWLLC Holdings LLC	7/13/2016	14:50:08	A	25R	PC12	90.9	88.0	VIO
JetBlue Airways Corporation	7/13/2016	23:30:52	D	30	A320	89.4	79.0	VIO + Alt Enf
Private	7/14/2016	23:30:03	A	30	PA44	82.4	79.0	VIO
JetBlue Airways Corporation	7/14/2016	23:33:32	D	30	A320	85.9	79.0	VIO + Alt Enf
ABC Elite Aviation Inc	7/18/2016	2:44:07	A	30	H25B	85.2	79.0	VIO
American Airlines	7/19/2016	0:34:41	A	30	CRJ9	89.2	79.0	VIO
Chandelle LLC	7/19/2016	19:56:36	D	25R	VEL	94.2	92.0	VIO
JetBlue Airways Corporation	7/20/2016	0:17:38	D	30	A320	94.5	79.0	VIO + Alt Enf
Private	7/20/2016	23:15:59	A	30	PA44	81.7	79.0	VIO
JetBlue Airways Corporation	7/20/2016	23:29:10	D	30	A320	86.9	79.0	VIO + Alt Enf
Atlas Air (MLW Air)	7/21/2016	0:04:56	D	30	B767	96.5	79.0	VIO
JetBlue Airways Corporation	7/21/2016	2:23:51	A	30	A320	93.2	79.0	VIO + Alt Enf
JetBlue Airways Corporation	7/21/2016	3:24:50	D	30	A320	88.1	79.0	VIO + Alt Enf
JetBlue Airways Corporation	7/25/2016	23:43:28	A	30	A320	92.9	79.0	VIO + Alt Enf
Alaska Airlines	7/26/2016	22:13:59	A	30	B737	94	90.0	VIO
JetBlue Airways Corporation	7/26/2016	23:42:17	A	30	A320	91.6	79.0	VIO + Alt Enf
JetBlue Airways Corporation	7/29/2016	2:34:21	A	30	A320	92.7	79.0	VIO + Alt Enf
Flexjet, LLC	7/29/2016	23:36:46	A	30	CL30	88.4	79.0	VIO
TVPX ARS Inc.	7/30/2016	23:12:41	A	30	GLF6	87.9	79.0	VIO
JetBlue Airways Corporation	7/30/2016	23:16:25	D	30	A320	89.9	79.0	VIO + Alt Enf

DEFINITIONS:

A/C Type — Aircraft Type

RWY — Runway

A/D/G — Arrival / Departure / Ground Operation

SEL — SENEL — Single Event Noise Exposure Level (dBA)

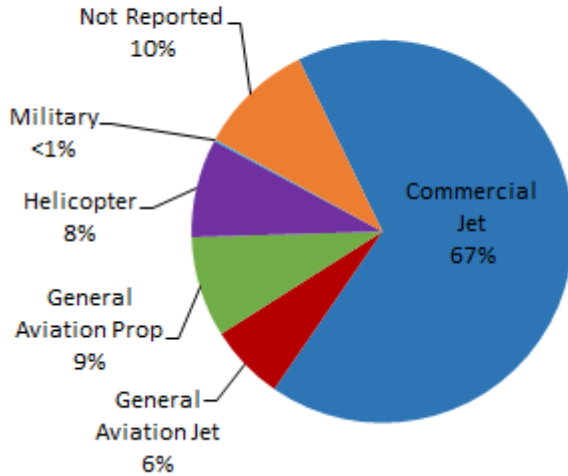
ALT ENF — Alternative Enforcement

VIO — Violation

LGB AIRCRAFT NOISE COMPLAINTS

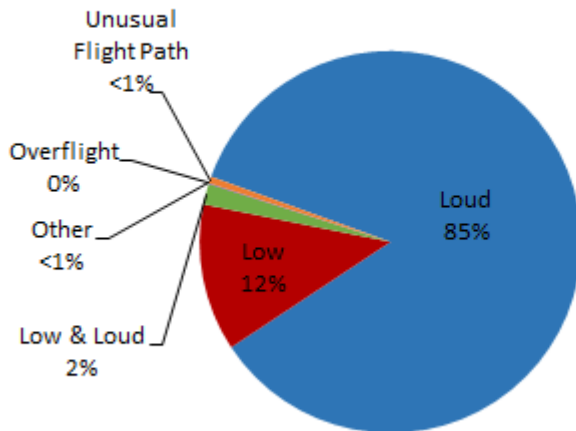
July 2016

Complaints by Aircraft Types

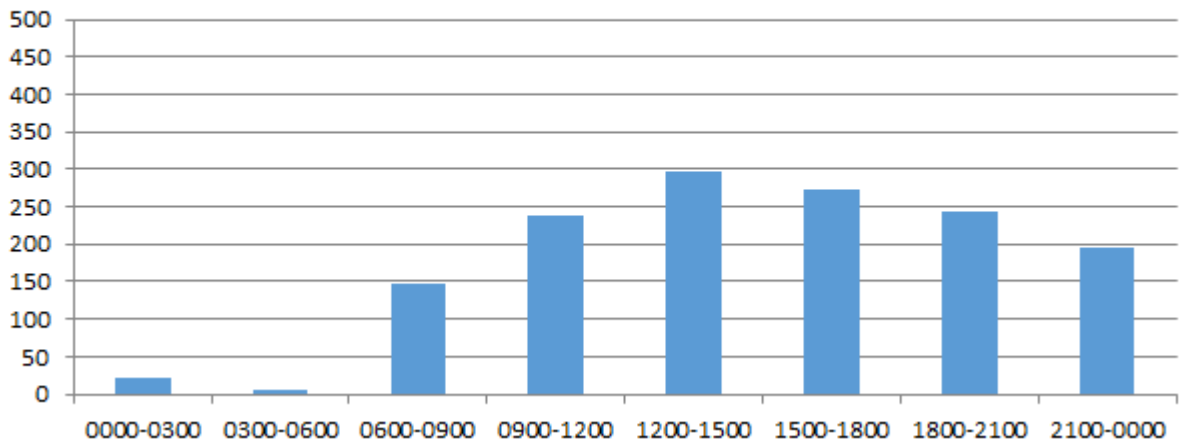


Complaints by Zip Code		
Code	Complaints	Units
90501	2	2
90505	1	1
90712	1	1
90740	8	7
90803	1	1
90806	1	1
90807	99	21
90808	5	2
90815	1	1
92612	26	1
92626	714	2
92646	392	1
92647	4	1
92648	83	5
92649	77	9
Not Reported	5	3
Grand Total	1,420	59

Complaints by Concern



Complaints by Time





long beach airport



Long Beach Airport

4100 E. Donald Douglas Drive, Long Beach, CA 90808

www.lgb.org • lgbapt@longbeach.gov

Administration • (562) 570-2619