

## Airport Advisory Commission

**Karen Sherman**  
Chair

**Glenn Ray**  
Vice Chair

**Jeffrey Anderson**

**Wayne Chaney Sr.**

**Elizabeth Cruz**

**Hal Gosling**

**Gerald Mineghino**

**Jeff Rowe**

**Roland B. Scott, Jr.**

## Airport Management

**Jess L. Romo, A.A.E.**  
Airport Director

**Juan López-Rios**  
Deputy Airport Director

**Ken Mason**  
Executive Assistant

**Carolyn Carlton-Lowe**  
Operations & Facilities  
Bureau Manager

**Claudia Lewis**  
Manager of Administration  
& Finance

**Ambi Thurai**  
Engineering Officer

**Dale Worsham**  
Administrative Officer

**Fred Pena**  
Facilities Management Officer

**Karl Zittel**  
Airside Operations Officer

**Stephanie Montuya-Morisky**  
Public Affairs Officer

**Ron Reeves**  
Noise & Environmental Affairs  
Officer



**long beach**  
airport



# Long Beach Airport Monthly Noise Report September 2016

**COMMERCIAL AIRCRAFT LATE NIGHT ACTIVITY**  
**LGB Current Month & Calendar Year-To-Date Statistics (10 PM- 7AM)**  
**September 2016**

#	September			CY-T-D 2016		
	2016	2015	Change	2016	2015	Change
<b>10PM - 11PM Activity</b>						
<b>Air Carrier &amp; Commuter Operations</b>	<b>2,377</b>	<b>1,943</b>	<b>22.3%</b>	<b>19,326</b>	<b>18,183</b>	<b>6.3%</b>
Alaska/Horizon	0	0		0	0	
Delta/SkyWest	0	1	-100.0%	16	5	220.0%
FedEx	0	0		0	0	
JetBlue Airways	13	8	62.5%	187	137	36.5%
Southwest	2	0	200.0%	3	0	300.0%
UPS	0	0		0	0	
US Airways/American Airlines	2	1	100.0%	15	30	-50.0%
<b>Subtotal 10PM-11PM</b>	<b>17</b>	<b>10</b>	<b>70.0%</b>	<b>221</b>	<b>172</b>	<b>28.5%</b>
<b>11PM- 7AM Activity</b>						
<b>2016</b>	<b>2015</b>	<b>Change</b>	<b>2016</b>	<b>2015</b>	<b>Change</b>	
Alaska/Horizon	0	0		0	0	
Delta/SkyWest	0	1	-100.0%	3	4	-25.0%
FedEx	0	0		0	0	
JetBlue Airways	8	2	300.0%	104	56	85.7%
Southwest	0	0		1	0	100.0%
UPS	0	0		0	0	
US Airways/American Airlines	0	3	-300.0%	21	12	75.0%
<b>Subtotal 11PM-7AM</b>	<b>8</b>	<b>6</b>	<b>33.3%</b>	<b>129</b>	<b>72</b>	<b>79.2%</b>
<b>TOTAL</b>	<b>25</b>	<b>16</b>	<b>56.3%</b>	<b>350</b>	<b>244</b>	<b>43.4%</b>

Notes:

1.1% (25 of 2,377) of total commercial operations occurred between 10pm - 7am.

0.8 flights - Nightly average for all late night (10:00 PM—7:00 AM) commercial flights, includes unanticipated delays.

0.3 flights - Nightly average for commercial flights after 11 PM.

# AIRPORT OPERATIONS & AIRCRAFT NOISE VIOLATIONS

## LGB Current Month & Calendar Year-To-Date Statistics

### September 2016

September				CY-T-D 2016		
<b>Air Carrier Noise Violations</b>	<b>2016</b>	<b>2015</b>	<b>Change</b>	<b>2016</b>	<b>2015</b>	<b>Change</b>
Alaska/Horizon	0	0		0	0	
Delta/SkyWest	0	0		4	0	400.0%
FedEx	0	0		0	0	
JetBlue Airways	6	1	500.0%	95	51	86.3%
Southwest	0	0		0	0	
UPS	0	0		1	1	0.0%
US Airways/American Airlines	0	1	-100.0%	4	6	-33.3%
<b>Subtotal</b>	<b>6</b>	<b>2</b>	<b>200.0%</b>	<b>104</b>	<b>58</b>	<b>79.3%</b>
<b>Commuter Noise Violations</b>	<b>2016</b>	<b>2015</b>	<b>Change</b>	<b>2016</b>	<b>2015</b>	<b>Change</b>
Alaska/Horizon	0	0		0	0	
Delta/SkyWest	0	0		1	3	-66.7%
USA/AAL/Mesa Airlines	0	0		0	0	
<b>Subtotal</b>	<b>0</b>	<b>0</b>		<b>1</b>	<b>3</b>	<b>-66.7%</b>
<b>Non-Commercial Noise Violations</b>	<b>2016</b>	<b>2015</b>	<b>Change</b>	<b>2016</b>	<b>2015</b>	<b>Change</b>
All GA, Charter & Other	12	13	-7.7%	131	137	-4.4%
<b>TOTAL</b>	<b>18</b>	<b>15</b>	<b>20.0%</b>	<b>236</b>	<b>198</b>	<b>19.2%</b>
<b>Monetary Fines</b>						
Airport Surcharges	\$1,600	\$1,200		\$14,000	\$11,500	
Consent Decree	\$30,000	\$6,000		\$444,000	\$225,000	
<b>TOTAL</b>	<b>\$31,600</b>	<b>\$7,200</b>		<b>\$458,000</b>	<b>\$236,500</b>	
<b>Airport Operations (FAA)</b>	<b>2016</b>	<b>2015</b>	<b>Change</b>	<b>2016</b>	<b>2015</b>	<b>Change</b>
Air Carrier + Commuter Carriers	2,377	1,943	22.3%	19,326	18,183	6.3%
Air Taxi + General Aviation	25,651	24,108	6.4%	219,927	216,454	1.6%
Military Operations	88	164	-60.2%	1,048	1,636	-35.9%
<b>Total Aircraft Operations</b>	<b>28,116</b>	<b>26,272</b>	<b>7.0%</b>	<b>240,301</b>	<b>236,273</b>	<b>1.7%</b>

Notes:

0.06% (18 of 28,116) of the Airport's total aircraft operations (Commercial & GA) resulted in an aircraft noise violation.

0.3% (6 of 2,377) the Airports Commercial operations (Commercial & Commuter) resulted in an aircraft noise violation.

USA— US Airways

AAL— American Airlines

# AIRCRAFT NOISE VIOLATORS

## September 2016

OWNERNAME	DATE	TIME	A/D	RWY	A/C TYPE	SEL	LIMIT	STATUS
Algonquin Airlink Inc.	9/1/2016	6:22:27	D	12	C560	94.3	90.0	VIO
Flying Cowboys LLC	9/6/2016	4:26:10	A	30	BE20	88.4	79.0	VIO
MP Aviation LLC	9/6/2016	16:11:37	D	30	B721	106.4	102.5	VIO
MP Aviation LLC	9/6/2016	22:44:00	A	30	B721	99.7	90.0	VIO
MP Aviation LLC	9/7/2016	16:53:01	D	30	B721	106.0	102.5	VIO
JetBlue Airways Corporation	9/13/2016	23:08:57	A	25R	A320	93.8	n/a	VIO + Alt Enf
JetBlue Airways Corporation	9/14/2016	0:07:06	D	25R	A320	97.5	n/a	VIO + Alt Enf
J&M Aircraft LLC	9/16/2016	16:14:03	A	25R	PC12	90.5	88.0	VIO
JetBlue Airways Corporation	9/18/2016	22:07:31	D	30	A320	96.5	90.0	VIO
Fortress One LLC	9/19/2016	0:07:58	D	30	CL30	82.0	79.0	VIO
C400LS LLC	9/21/2016	1:26:17	A	30	BE30	88.5	79.0	VIO
JetBlue Airways Corporation	9/22/2016	23:42:41	D	30	A320	90.7	79.0	VIO + Alt Enf
Issue V Inc.	9/25/2016	23:43:09	A	30	E505	86.5	79.0	VIO
Royal Air Freight	9/27/2016	1:15:37	A	30	LJ35	87.0	79.0	VIO
SoCal Jet Services Inc	9/28/2016	5:35:50	D	30	C175	82.2	79.0	VIO
JetBlue Airways Corporation	9/28/2016	23:28:15	D	30	A320	90.0	79.0	VIO + Alt Enf
MLW Aviation LLC	9/29/2016	0:21:42	D	30	B752	92.4	79.0	VIO
JetBlue Airways Corporation	9/30/2016	23:47:11	D	30	A320	90.0	79.0	VIO + Alt Enf

**DEFINITIONS:**

**A/C Type** — Aircraft Type

**RWY** — Runway

**A/D/G** — Arrival / Departure / Ground Operation

**SEL** — SENEL — Single Event Noise Exposure Level (dBA)

**ALT ENF** — Alternative Enforcement

**VIO** — Violation

## AIR CARRIER NOISE BUDGET PERFORMANCE

October 2015 - September 2016

RMT #	NOISE BUDGET	ACTUAL	PERCENT BUDGET USED
9	70.7	44.9	64%
10	84.6	51.3	61%

**DEFINITIONS:**

**RMT** — Remote Monitoring Terminal

## TOTAL NOISE BUDGET PERFORMANCE

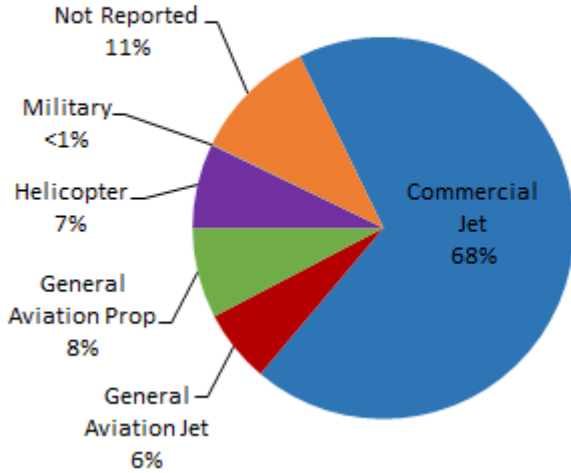
October 2015 - September 2016

RMT #	NOISE BUDGET	ACTUAL	PERCENT BUDGET USED
9	102.7	56.1	55%
10	120.9	68.9	57%

# LGB AIRCRAFT NOISE COMPLAINTS

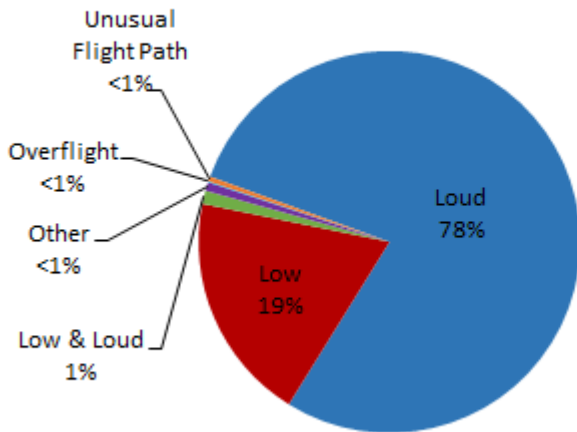
## September 2016

### Complaints by Aircraft Types

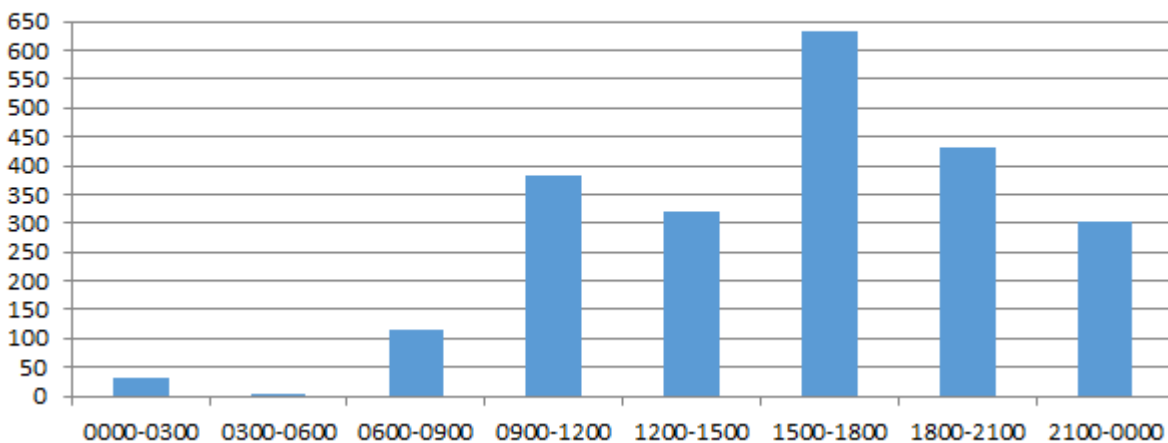


Complaints by Zip Code		
Code	Complaints	Units
90501	5	3
90712	1	1
90740	2	2
90755	1	1
90803	2	2
90804	1	1
90807	88	42
90808	46	9
90815	3	3
92612	39	1
92626	615	2
92646	1,071	1
92648	189	2
92649	139	8
Not Reported	13	10
<b>Grand Total</b>	<b>2,215</b>	<b>88</b>

### Complaints by Concern



### Complaints by Time





# long beach airport



## Long Beach Airport

4100 E. Donald Douglas Drive, Long Beach, CA 90808

[www.lgb.org](http://www.lgb.org) • [lgbapt@longbeach.gov](mailto:lgbapt@longbeach.gov)

Administration • (562) 570-2619