

Airport Advisory Commission

Karen Sherman
Chair

Glenn Ray
Vice Chair

Jeffrey Anderson

Wayne Chaney Sr.

Elizabeth Cruz

Hal Gosling

Gerald Mineghino

Jeff Rowe

Roland B. Scott, Jr.

Airport Management

Jess L. Romo, A.A.E.
Airport Director

Juan López-Rios
Deputy Airport Director

Ken Mason
Executive Assistant

Carolyn Carlton-Lowe
Operations & Facilities
Bureau Manager

Claudia Lewis
Manager of Administration
& Finance

Ambi Thurai
Engineering Officer

Dale Worsham
Administrative Officer

Fred Pena
Facilities Management Officer

Karl Zittel
Airsides Operations Officer

Stephanie Montuya-Morisky
Public Affairs Officer

Ron Reeves
Noise & Environmental Affairs
Officer



long beach
airport



Long Beach Airport Monthly Noise Report October 2016

COMMERCIAL AIRCRAFT LATE NIGHT ACTIVITY
LGB Current Month & Calendar Year-To-Date Statistics (10 PM- 7AM)
October 2016

October				CY-T-D 2016		
10PM - 11PM Activity	2016	2015	Change	2016	2015	Change
Air Carrier & Commuter Operations	2,551	1,971	29.4%	21,877	20,154	8.5%
Alaska/Horizon	0	0		0	0	
Delta/SkyWest	2	0	200.0%	18	5	260.0%
FedEx	0	0		0	0	
JetBlue Airways	20	7	185.7%	207	144	43.8%
Southwest	0	0		3	0	300.0%
UPS	1	0	100.0%	1	0	100.0%
US Airways/American Airlines	2	0	200.0%	17	30	-43.3%
Subtotal 10PM-11PM	25	7	257.1%	246	179	37.4%
11PM- 7AM Activity	2016	2015	Change	2016	2015	Change
Alaska/Horizon	0	0		0	0	
Delta/SkyWest	0	0		3	4	-25.0%
FedEx	0	0		0	0	
JetBlue Airways	4	4	0.0%	108	60	80.0%
Southwest	0	0		1	0	100.0%
UPS	0	0		0	0	
US Airways/American Airlines	1	2	-50.0%	22	14	57.1%
Subtotal 11PM-7AM	5	6	-16.7%	134	78	71.8%
TOTAL	30	13	130.8%	380	257	47.9%

Notes:

1.2% (30 of 2,551) of total commercial operations occurred between 10pm - 7am.

1.0 flights - Nightly average for all late night (10:00 PM—7:00 AM) commercial flights, includes unanticipated delays.

0.2 flights - Nightly average for commercial flights after 11 PM.

AIRPORT OPERATIONS & AIRCRAFT NOISE VIOLATIONS

LGB Current Month & Calendar Year-To-Date Statistics

October 2016

October				CY-T-D 2016		
Air Carrier Noise Violations	2016	2015	Change	2016	2015	Change
Alaska/Horizon	0	0		0	0	
Delta/SkyWest	0	0		4	0	400.0%
FedEx	0	0		0	0	
JetBlue Airways	5	4	25.0%	100	55	81.8%
Southwest	0	0		0	0	
UPS	0	0		1	1	0.0%
US Airways/American Airlines	0	0		4	6	-33.3%
Subtotal	5	4	25.0%	109	62	75.8%
Commuter Noise Violations	2016	2015	Change	2016	2015	Change
Alaska/Horizon	0	0		0	0	
Delta/SkyWest	0	0		1	3	-66.7
USA/AAL/Mesa Airlines	0	0		0	0	
Subtotal	0	0		1	3	-66.7%
Non-Commercial Noise Violations	2016	2015	Change	2016	2015	Change
All GA, Charter & Other	9	8	12.5%	140	145	-3.4%
TOTAL	14	12	16.7%	250	210	19.0%
Monetary Fines						
Airport Surcharges	\$700	\$900		\$14,700	\$12,400	
Consent Decree	\$12,000	\$9,000		\$456,000	\$234,000	
TOTAL	\$12,700	\$9,900		\$470,700	\$246,400	
Airport Operations (FAA)	2016	2015	Change	2016	2015	Change
Air Carrier + Commuter Carriers	2,551	1,971	29.4%	21,877	20,154	8.5%
Air Taxi + General Aviation	23,945	25,266	-5.2%	243,872	241,720	0.9%
Military Operations	84	214	-60.7%	1,132	1,850	-38.8%
Total Aircraft Operations	26,580	27,451	-3.2%	266,881	263,724	1.2%

Notes:

0.05% (14 of 26,580) of the Airport's total aircraft operations (Commercial & GA) resulted in an aircraft noise violation.

0.2% (5 of 2,551) the Airports Commercial operations (Commercial & Commuter) resulted in an aircraft noise violation.

USA— US Airways

AAL— American Airlines

AIRCRAFT NOISE VIOLATORS

October 2016

OWNERNAME	DATE	TIME	A/D	RWY	A/C TYPE	SEL	LIMIT	STATUS
Romanza Aviation LLC	10/3/2016	23:18:16	A	30	C525	87.6	79.0	VIO
Go Far Aviation LLC	10/5/2016	1:22:36	D	30	C525	86.6	79.0	VIO
Prestige Air LLC	10/9/2016	10:21:30	A	25R	A109E	92.9	88.0	VIO
AI 650 LLC	10/9/2016	23:20:51	D	30	GLF6	82.5	79.0	VIO
JetBlue Airways Corporation	10/13/2016	22:13:55	D	30	A320	95.4	90.0	VIO
JetBlue Airways Corporation	10/14/2016	2:57:12	A	25R	A320	92.1	n/a	VIO + Alt Enf
JetBlue Airways Corporation	10/16/2016	2:03:25	D	25R	A320	97.7	n/a	VIO + Alt Enf
JetBlue Airways Corporation	10/18/2016	23:21:27	A	25R	A320	92.5	n/a	VIO + Alt Enf
Private	10/19/2016	14:15:36	A	25L	S-2C	97.7	93.0	VIO
Chandelle LLC	10/22/2016	15:49:36	D	25R	VEL	95.8	92.0	VIO
Private	10/23/2016	14:45:35	A	25L	DA42	97.3	93.0	VIO
JetBlue Airways Corporation	10/25/2016	0:03:38	D	25R	A320	98	n/a	VIO + Alt Enf
Ameristar Jet Charter, Inc.	10/30/2016	6:34:08	A	30	DC91	97.6	90.0	VIO
ECJET Inc	10/31/2016	17:19:37	A	25R	PA31	91.4	88.0	VIO

DEFINITIONS:

A/C Type — Aircraft Type

RWY — Runway

A/D/G — Arrival / Departure / Ground Operation

SEL — SENEL — Single Event Noise Exposure Level (dBA)

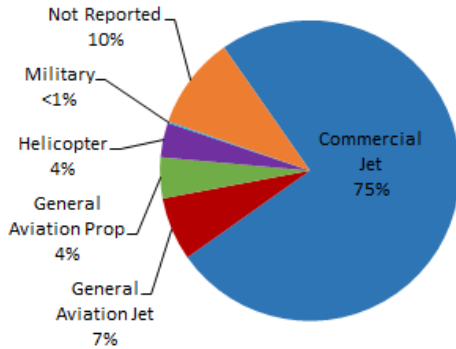
ALT ENF — Alternative Enforcement

VIO — Violation

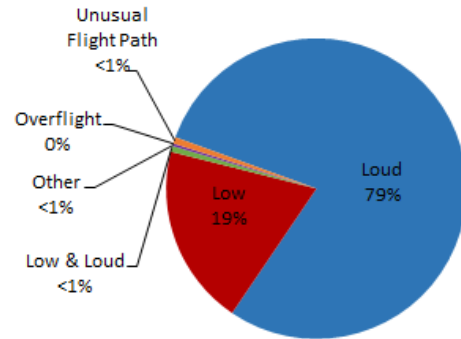
LGB AIRCRAFT NOISE COMPLAINTS

October 2016

Complaints by Aircraft Types



Complaints by Concern



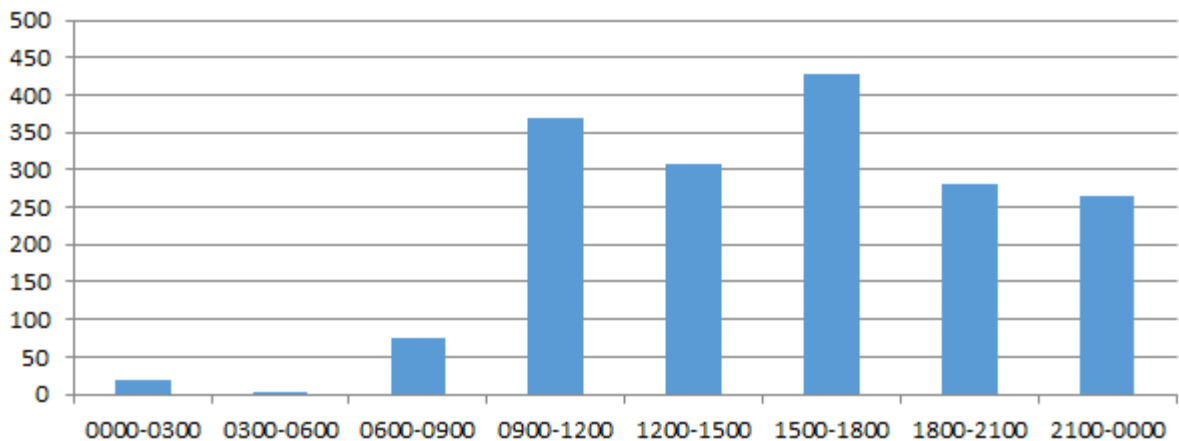
Complaints by Zip Code

Zip Code	Complaints	Units
90501	3	1
90716	1	1
90740	4	1
90803	2	2
90805	1	1
90807	69	21
90808	30	7
90815	3	2
92612	12	1
92626	566	2
92646	795	2
92648	142	1
92649	108	4
Not Reported	11	9
Grand Total	1,747	55

Long Beach Residents Helicopter Complaints Submitted to FAA

Zip Code	Individual Complaints	Number of Individuals	Anonymous Complaints	Total Complaints
90802	2	2	4	6
90803	95	8	55	150
90808	0	n/a	60	60
90814	515	9	57	572
90815	0	n/a	2	2
Grand Total	612	19	178	790

Complaints by Time





long beach airport



Long Beach Airport

4100 E. Donald Douglas Drive, Long Beach, CA 90808

www.lgb.org • lgbapt@longbeach.gov

Administration • (562) 570-2619