

Airport Advisory Commission

Karen Sherman
Chair

Glenn Ray
Vice Chair

Jeffrey Anderson

Wayne Chaney Sr.

Elizabeth Cruz

Hal Gosling

Gerald Mineghino

Jeff Rowe

Roland B. Scott, Jr.

Airport Management

Jess L. Romo, A.A.E.
Airport Director

Juan López-Rios
Deputy Airport Director

Ken Mason
Executive Assistant

Claudia Lewis
Manager of Administration
& Finance

Ambi Thurai
Engineering Officer

Dale Worsham
Administrative Officer

Fred Pena
Facilities Management Officer

Karl Zittel
Airsides Operations Officer

Stephanie Montuya-Morisky
Public Affairs Officer

Ron Reeves
Noise & Environmental Affairs
Officer



long beach
airport



Long Beach Airport Monthly Noise Report November 2016

COMMERCIAL AIRCRAFT LATE NIGHT ACTIVITY
LGB Current Month & Calendar Year-To-Date Statistics (10 PM- 7AM)
November 2016

				November		
10PM - 11PM Activity	2016	2015	Change	CY-T-D 2016		
				2016	2015	Change
Air Carrier & Commuter Operations	2,415	1,862	29.7%	24,292	22,016	10.3%
Alaska/Horizon	0	0		0	0	
Delta/SkyWest	1	1	0.0%	19	6	216.7%
FedEx	0	0		0	0	
JetBlue Airways	11	16	-31.3%	218	160	36.3%
Southwest	0	0		3	0	300.0%
UPS	0	0	100.0%	1	0	100.0%
US Airways/American Airlines	3	2	50.0%	20	32	-37.5%
Subtotal 10PM-11PM	15	19	-21.1%	261	198	31.8%
11PM- 7AM Activity	2016	2015	Change	2016	2015	Change
Alaska/Horizon	0	0		0	0	
Delta/SkyWest	1	0	100.0%	4	4	0.0%
FedEx	0	0		0	0	
JetBlue Airways	10	3	233.3%	118	63	87.3%
Southwest	0	0		1	0	100.0%
UPS	0	0		0	0	
US Airways/American Airlines	1	0	100.0%	23	14	64.3%
Subtotal 11PM-7AM	12	3	300.0%	146	81	80.2%
TOTAL	27	22	22.7%	407	279	45.9%

Notes:

1.1% (27 of 2,415) of total commercial operations occurred between 10pm - 7am.

0.9 flights - Nightly average for all late night (10:00 PM—7:00 AM) commercial flights, includes unanticipated delays.

0.4 flights - Nightly average for commercial flights after 11 PM.

AIRPORT OPERATIONS & AIRCRAFT NOISE VIOLATIONS

LGB Current Month & Calendar Year-To-Date Statistics

November 2016

November				CY-T-D 2016		
Air Carrier Noise Violations	2016	2015	Change	2016	2015	Change
Alaska/Horizon	0	0		0	0	
Delta/SkyWest	0	0		4	0	400.0%
FedEx	0	0		0	0	
JetBlue Airways	10	4	150.0%	110	59	86.4%
Southwest	0	0		0	0	
UPS	0	0		1	1	0.0%
US Airways/American Airlines	0	0		4	6	-33.3%
Subtotal	10	4	150.0%	119	66	80.3%
Commuter Noise Violations	2016	2015	Change	2016	2015	Change
Alaska/Horizon	0	0		0	0	
Delta/SkyWest	0	0		1	3	-66.7
USA/AAL/Mesa Airlines	0	0		0	0	
Subtotal	0	0		1	3	-66.7%
Non-Commercial Noise Violations	2016	2015	Change	2016	2015	Change
All GA, Charter & Other	17	16	6.3%	157	161	-2.5%
TOTAL	27	20	35.0%	277	230	20.4%
Monetary Fines						
Airport Surcharges	\$2,400	\$1,400		\$17,100	\$13,800	
Consent Decree	\$54,000	\$9,000		\$510,000	\$243,000	
TOTAL	\$56,400	\$10,400		\$527,100	\$256,800	
Airport Operations (FAA)	2016	2015	Change	2016	2015	Change
Air Carrier + Commuter Carriers	2,415	1,862	29.7%	24,292	22,016	10.3%
Air Taxi + General Aviation	22,611	21,038	7.5%	266,483	262,758	1.4%
Military Operations	99	169	-41.4%	1,231	2,019	-39.0%
Total Aircraft Operations	25,125	23,069	8.9%	292,006	286,793	1.8%

Notes:

0.1% (27 of 25,125) of the Airport's total aircraft operations (Commercial & GA) resulted in an aircraft noise violation.

0.4% (10 of 2,415) the Airports Commercial operations (Commercial & Commuter) resulted in an aircraft noise violation.

USA— US Airways

AAL— American Airlines

AIRCRAFT NOISE VIOLATORS

November 2016

OWNERNAME	DATE	TIME	A/D	RWY	A/C TYPE	SEL	LIMIT	STATUS
Career Aviation Co. Inc.	11/1/2016	12:42:23	D	30	B727	110.5	102.5	VIO
MP Aviation LLC	11/3/2016	11:28:46	D	30	B727	110.8	102.5	VIO
MP Aviation LLC	11/4/2016	22:31:01	D	30	B727	103.8	90.0	VIO
Paradigm Air Carriers Inc.	11/4/2016	23:18:29	A	30	B734	94.2	79.0	VIO
JetBlue Airways Corporation	11/6/2016	23:33:13	A	30	A320	94.3	79.0	VIO + Alt Enf
Paragon Airways	11/8/2016	0:00:40	A	30	C56X	87.3	79.0	VIO
Jet Plaid LLC	11/11/2016	23:08:26	D	30	FA50	94	79.0	VIO
JetBlue Airways Corporation	11/12/2016	2:02:14	A	30	A320	92.9	79.0	VIO + Alt Enf
Private	11/12/2016	9:11:58	D	07L	BE35	90.9	88.0	VIO
JetBlue Airways Corporation	11/14/2016	0:44:21	A	30	A320	92.4	79.0	VIO + Alt Enf
Valley Logistics LLC	11/15/2016	5:33:27	D	30	C510	86.2	79.0	VIO
Casey Company	11/16/2016	23:14:09	A	30	C560	89.9	79.0	VIO
MP Aviation LLC	11/17/2016	15:52:54	D	30	B727	107.3	102.5	VIO
Videotape Center	11/18/2016	23:52:04	A	30	BE36	87.4	79.0	VIO
Private	11/20/2016	10:20:09	A	25R	C172	91.5	88.0	VIO
Sunrider Corporation	11/20/2016	14:15:03	D	30	MD87	105.6	102.5	VIO
JetBlue Airways Corporation	11/20/2016	23:11:54	A	30	A320	94	79.0	VIO + Alt Enf
SWR Services II LLC	11/22/2016	0:43:03	A	30	GLF5	88.4	79.0	VIO
Buzzard Aviation, LLC	11/22/2016	23:35:53	A	30	C510	86.5	79.0	VIO
319MB LLC	11/23/2016	0:00:04	A	30	BE90	83.4	79.0	VIO
JetBlue Airways Corporation	11/23/2016	0:37:57	A	30	A320	93.9	79.0	VIO + Alt Enf
JetBlue Airways Corporation	11/26/2016	23:30:31	D	30	A320	94.1	79.0	VIO + Alt Enf
Tulsa Aircraft LLC	11/27/2016	23:13:16	A	30	C560	83.4	79.0	VIO
JetBlue Airways Corporation	11/28/2016	1:07:39	A	30	A320	93.7	79.0	VIO + Alt Enf
JetBlue Airways Corporation	11/28/2016	1:14:15	A	30	A320	94.4	79.0	VIO + Alt Enf

AIRCRAFT NOISE VIOLATORS

November 2016

OWNERNAME	DATE	TIME	A/D	RWY	A/C TYPE	SEL	LIMIT	STATUS
JetBlue Airways Corporation	11/28/2016	23:32:32	D	25R	A320	99	n/a	VIO + Alt Enf
JetBlue Airways Corporation	11/30/2016	0:21:29	A	30	A320	91.3	79.0	VIO + Alt Enf

DEFINITIONS:

A/C Type — Aircraft Type

RWY — Runway

A/D/G — Arrival / Departure / Ground Operation

SEL — SENEL — Single Event Noise Exposure Level (dBA)

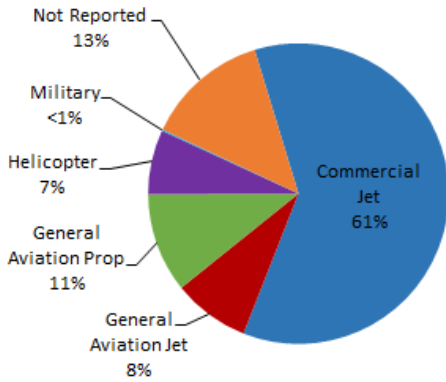
ALT ENF — Alternative Enforcement

VIO — Violation

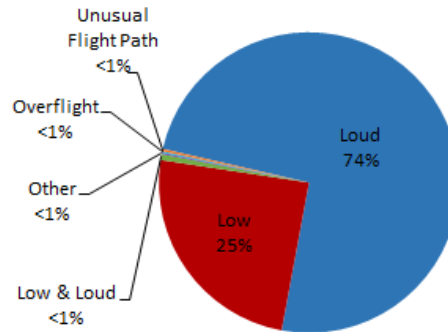
LGB AIRCRAFT NOISE COMPLAINTS

November 2016

Complaints by Aircraft Types



Complaints by Concern



Complaints by Zip Code¹

Zip Code	Complaints	Units
90501	2	2
90712	2	1
90740	4	3
90755	2	1
90803	2	1
90807	64	18
90808	13	7
90815	2	2
92612	37	1
92626	723	2
92646	246	1
92647	1	1
92648	134	2
92649	182	2
Not Reported	3	2
Grand Total	1,417	46

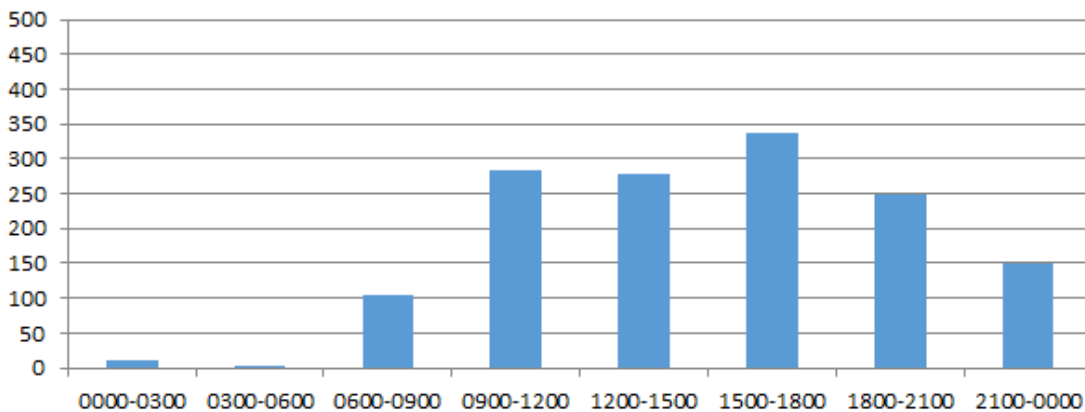
Long Beach Residents' Helicopter Complaints Submitted to FAA²

Zip Code	Individual Complaints	Number of Individuals	Anonymous Complaints	Total Complaints
90802	8	2	7	15
90803	37	5	74	111
90805	1	1	0	1
90807	1	1	0	1
90808	3	3	25	28
90809	0	n/a	1	1
90814	276	7	27	303
90815	0	n/a	1	1
Grand Total	326	19	135	461

¹ These data include data submitted directly to Long Beach Airport and does not include data submitted to FAA.

² These data include helicopter noise complaints submitted directly to FAA.

Complaints by Time





long beach airport



Long Beach Airport

4100 E. Donald Douglas Drive, Long Beach, CA 90808

www.lgb.org • lgbapt@longbeach.gov

Administration • (562) 570-2619