

Airport Advisory Commission

Karen Sherman
Chair

Jeffrey Anderson

Wayne Chaney Sr.

Elizabeth Cruz

Hal Gosling

Gerald Mineghino

Jeff Rowe

Roland B. Scott, Jr.

Airport Management

Jess L. Romo, A.A.E.
Airport Director

Juan López-Rios
Deputy Airport Director

Ken Mason
Executive Assistant

Claudia Lewis
Manager of Administration
& Finance

Fred Pena
Airport Operations Manager

Ambi Thurai
Engineering Officer

Dale Worsham
Administrative Officer

Karl Zittel
Airside Operations Officer

Stephanie Montuya-Morisky
Public Affairs Officer

Ron Reeves
Noise & Environmental Affairs
Officer



Long Beach Airport Monthly Noise Report March 2017

COMMERCIAL AIRCRAFT LATE NIGHT ACTIVITY
LGB Current Month & Calendar Year-To-Date Statistics (10 PM- 7AM)
March 2017

#	March			CY-T-D 2017		
	2017	2016	Change	2017	2016	Change
10PM - 11PM Activity						
Air Carrier & Commuter Operations	3,113	1,957	59.1%	8,728	5,596	56.0%
American/Mesa Airlines	1	1	0.0%	6	4	50.0%
Delta/SkyWest Airlines	3	11	-72.7%	11	14	-21.4%
FedEx	0	0		0	0	
JetBlue Airways	35	28	25.0%	114	86	32.6%
Southwest Airlines	0	0		7	0	700.0%
UPS	0	0		0	0	
Subtotal 10PM-11PM	39	40	-2.5%	138	104	32.7%
11PM- 7AM Activity						
11PM- 7AM Activity	2017	2016	Change	2017	2016	Change
American/Mesa Airlines	3	11	-72.7%	6	13	-53.8%
Delta/SkyWest Airlines	0	1	-100.0%	2	2	0.0%
FedEx	0	0		0	0	
JetBlue Airways	15	22	-31.8%	61	50	22.0%
Southwest Airlines	0	0		5	0	500.0%
UPS	0	0		0	0	
Subtotal 11PM-7AM	18	34	-47.1%	74	65	13.8%
TOTAL	57	74	-23.0%	212	169	25.4%

Notes:

1.8% (57 of 3,113) of total commercial operations occurred between 10pm - 7am.

1.8 flights - Nightly average for all late night (10:00 PM—7:00 AM) commercial flights, includes unanticipated delays.

0.6 flights - Nightly average for commercial flights after 11 PM.

Of the 57 Late-Night Operations, 35% were due to mechanical issues, 25% occurred during the 5-minute grace period, 21% were due to poor weather conditions, 11% were due to air traffic control-related issues, 4% were due to crew-related issues, 4% were due to unknown reasons and 2% were due to weight and balance-related issues with an aircraft.

AIRPORT OPERATIONS & AIRCRAFT NOISE VIOLATIONS

LGB Current Month & Calendar Year-To-Date Statistics

March 2017

March				CY-T-D 2017		
Air Carrier Noise Violations	2017	2016	Change	2017	2016	Change
American/Mesa Airlines	2	0	200.0%	2	0	200.0%
Delta/SkyWest Airlines	0	3	-300.0%	1	3	-66.7%
FedEx	0	0		0	0	
JetBlue Airways	14	23	-39.1%	57	49	16.3%
Southwest Airlines	0	0		2	0	200.0%
UPS	0	1	-100.0%	0	1	-100.0%
Subtotal	16	27	-40.7%	62	43	17.0%
Commuter Noise Violations	2017	2016	Change	2017	2016	Change
American/Mesa Airlines	0	0		0	0	
Delta/SkyWest Airlines	0	0		0	1	-100.0%
Subtotal	0	0		0	1	-100.0%
Non-Commercial Noise Violations	2017	2016	Change	2017	2016	Change
All GA, Charter & Other	16	20	-20.0%	55	45	22.2%
TOTAL	32	47	-31.9%	117	99	18.2%
Monetary Fines						
Airport Surcharges	\$2,100	\$2,500		\$7,100	\$4,200	
Consent Decree	\$72,000	\$120,000		\$306,000	\$258,000	
TOTAL	\$74,100	\$122,500		\$313,100	\$262,200	
Airport Operations (FAA)	2017	2016	Change	2017	2016	Change
Air Carrier + Commuter Carriers	3,113	1,957	59.1%	8,728	5,596	56.0%
Air Taxi + General Aviation	23,781	24,749	-3.9%	61,899	69,749	-11.3%
Military Operations	116	207	-44.0%	327	419	-22.0%
Total Aircraft Operations	27,010	26,913	0.4%	70,954	75,764	-6.3%

Notes:

0.1% (32 of 27,010) of the Airport's total aircraft operations (Commercial & GA) resulted in an aircraft noise violation.

0.5% (16 of 3,113) the Airports Commercial operations (Commercial & Commuter) resulted in an aircraft noise violation.

AIRCRAFT NOISE VIOLATORS

March 2017

OWNERNAME	DATE	TIME	A/D	RWY	A/C TYPE	SEL	LIMIT	STATUS
Moki Corp	3/1/2017	23:31:11	A	30	C680	84.2	79.0	VIO
JetBlue Airways Corporation	3/3/2017	23:26:57	A	30	A320	93.4	79.0	VIO + Alt Enf
Experimental Aircraft Association	3/5/2017	10:58:04	A	25R	B17	92.8	88.0	VIO
JetBlue Airways Corporation	3/5/2017	23:22:05	D	30	A320	90.7	79.0	VIO + Alt Enf
Little Big Horn Co.	3/6/2017	11:51:49	A	25R	R22	91	88.0	VIO
Private	3/7/2017	14:39:46	D	25R	BL17	95.7	92.0	VIO
Sunrider Corporation	3/9/2017	9:27:38	D	30	MD87	105	102.5	VIO
JetBlue Airways Corporation	3/9/2017	22:10:58	A	30	A320	94	90.0	VIO
Aspen Helicopters Inc.	3/9/2017	23:36:43	A	30	PA31	87.8	79.0	VIO
JetBlue Airways Corporation	3/10/2017	23:08:19	D	30	A320	96	79.0	VIO + Alt Enf
Jacksons Food Stores Inc	3/11/2017	0:25:10	A	30	PC12	90.2	79.0	VIO
Skechers USA Inc	3/11/2017	3:14:27	A	30	GL5T	89.4	79.0	VIO
JetBlue Airways Corporation	3/11/2017	22:50:39	D	30	A320	95.1	90.0	VIO
American Airlines	3/12/2017	23:19:58	A	30	CRJ9	91.9	79.0	VIO
Steelwood Partners LLC	3/15/2017	4:44:50	A	30	B350	85.5	79.0	VIO
Swift Air LLC	3/15/2017	23:07:39	D	30	A320	95.1	79.0	VIO
JetBlue Airways Corporation	3/15/2017	23:32:54	D	30	A320	90	79.0	VIO + Alt Enf
Grupo Corporativo Cever S.A.	3/17/2017	14:42:52	A	30	GLF2	103.6	101.5	VIO
Kaiser Air, Inc.	3/17/2017	22:44:24	A	30	B737	94	90.0	VIO
Mammoth Beach LLC	3/17/2017	23:21:55	A	30	B350	83.2	79.0	VIO
Leilani Aviation Holdings Inc.	3/22/2017	12:51:40	A	25R	C550	90.7	88.0	VIO
JetBlue Airways Corporation	3/22/2017	23:07:57	A	30	A320	94.4	79.0	VIO + Alt Enf
Private	3/22/2017	23:29:48	D	30	C172	82.4	79.0	VIO
JetBlue Airways Corporation	3/25/2017	23:18:35	A	30	A320	93.9	79.0	VIO + Alt Enf
JetBlue Airways Corporation	3/26/2017	23:19:03	A	30	A320	93.2	79.0	VIO + Alt Enf
JetBlue Airways Corporation	3/28/2017	23:20:27	A	30	A320	93.7	79.0	VIO + Alt Enf

AIRCRAFT NOISE VIOLATORS

March 2017

OWNERNAME	DATE	TIME	A/D	RWY	A/C TYPE	SEL	LIMIT	STATUS
MCS Leasing Inc.	3/29/2017	0:00:06	A	30	CL60	87.9	79.0	VIO
American Airlines	3/30/2017	22:35:42	A	30	CRJ9	94.3	90.0	VIO
JetBlue Airways Corporation	3/31/2017	0:40:42	A	30	A320	95.3	79.0	VIO + Alt Enf
JetBlue Airways Corporation	3/31/2017	1:47:59	D	30	A320	85.8	79.0	VIO + Alt Enf
JetBlue Airways Corporation	3/31/2017	2:22:33	A	30	A320	93.3	79.0	VIO + Alt Enf
JetBlue Airways Corporation	3/31/2017	23:29:18	A	30	A320	94.4	79.0	VIO + Alt Enf

DEFINITIONS:

A/C Type — Aircraft Type

RWY — Runway

A/D/G — Arrival / Departure / Ground Operation

SEL — SENEL — Single Event Noise Exposure Level (dBA)

ALT ENF — Alternative Enforcement

VIO — Violation

AIR CARRIER NOISE BUDGET PERFORMANCE

April 2016 - March 2017

RMT #	NOISE BUDGET	ACTUAL	PERCENT BUDGET USED
9	70.7	54.2	77%
10	84.6	67.5	80%

DEFINITIONS:

RMT — Remote Monitoring Terminal

TOTAL NOISE BUDGET PERFORMANCE

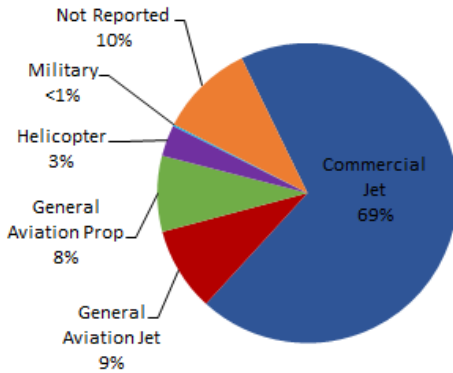
April 2016 - March 2017

RMT #	NOISE BUDGET	ACTUAL	PERCENT BUDGET USED
9	102.7	64.4	63%
10	120.9	82.3	68%

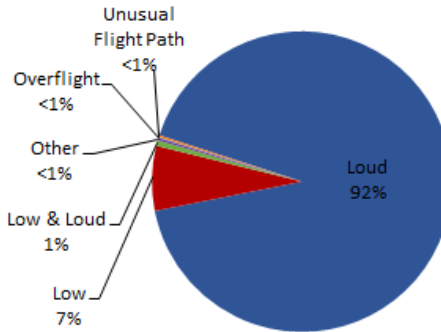
LGB AIRCRAFT NOISE COMPLAINTS

March 2017

Complaints by Aircraft Types



Complaints by Concern



Complaints by Zip Code¹

Zip Code	Complaints	Units
90501	2	2
90712	4	2
90755	4	1
90802	1	1
90805	1	1
90807	23	10
90808	7	4
90815	3	3
92612	51	1
92626	725	3
92629	2	2
92647	2	1
92648	518	2
92649	290	8
92677	1	1
92694	1	1
Not Reported	1	1
Grand Total	1,636	44

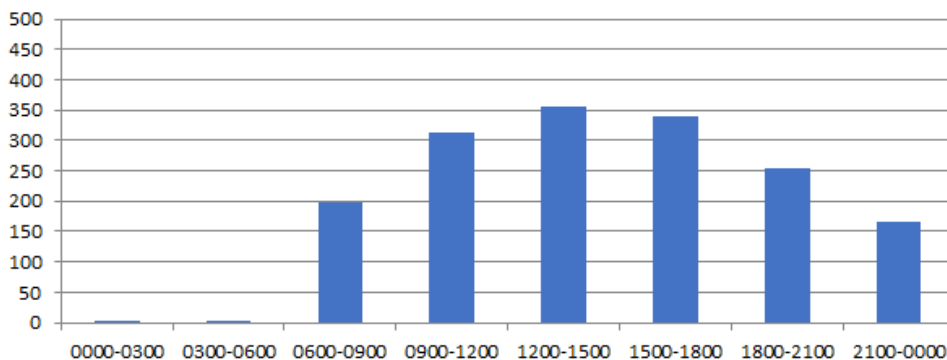
Long Beach Residents' Helicopter Complaints Submitted to FAA²

Zip Code	Individual Complaints	Number of Individuals	Anonymous Complaints	Total Complaints
90802	7	3	8	15
90803	253	7	107	360
90804	9	1	2	11
90806	1	1	0	1
90808	3	2	23	26
90810	0	n/a	12	12
90813	0	n/a	2	2
90814	296	9	38	334
Grand Total	569	23	192	761

¹ These data include data submitted directly to Long Beach Airport and does not include data submitted to FAA.

² These data reflect helicopter noise complaints submitted directly to FAA.

Complaints by Time





long beach airport



Long Beach Airport

4100 E. Donald Douglas Drive, Long Beach, CA 90808

www.lgb.org • lgbapt@longbeach.gov

Administration • (562) 570-2619