

## Airport Advisory Commission

**Wayne Chaney Sr.**  
Chair

**Jeffrey Anderson**  
Vice Chair

**Alvaro Castillo**

**Hal Gosling**

**Rita Nayak**

**Phil Ramsdale**

**Jeff Rowe**

**Roland B. Scott, Jr.**

**Karen Sherman**

## Airport Management

**Jess L. Romo, A.A.E.**  
Airport Director

**Juan López-Rios**  
Deputy Airport Director

**Ken Mason**  
Executive Assistant

**Claudia Lewis**  
Manager of Administration  
& Finance

**Fred Pena**  
Airport Operations Manager

**Ambi Thurai**  
Engineering Officer

**Dale Worsham**  
Administrative Officer

**Karl Zittel**  
Airside Operations Officer

**Stephanie Montuya-Morisky**  
Public Affairs Officer

**Steve Spurlock**  
Superintendent of Safety and  
Security

**Matthew Brookes**  
Airport Properties Officer

**Ron Reeves**  
Noise & Environmental Affairs  
Officer



**long beach**  
airport



# Long Beach Airport Monthly Noise Report January 2018

**COMMERCIAL AIRCRAFT LATE NIGHT ACTIVITY**  
**LGB Current Month & Calendar Year-To-Date Statistics (10 PM- 7AM)**  
**January 2018**

January				CY-T-D 2018		
10PM - 11PM Activity	2018	2017	Change	2018	2017	Change
<b>Air Carrier &amp; Commuter Operations</b>	<b>3,128</b>	<b>2,926</b>	<b>6.9%</b>	<b>3,128</b>	<b>2,926</b>	<b>6.9%</b>
American/Mesa/SkyWest Airlines	1	1	0.0%	1	1	0.0%
Delta/SkyWest Airlines	2	6	-66.7%	2	6	-66.7%
FedEx	0	0		0	0	
JetBlue Airways	31	39	-20.5%	31	39	-20.5%
Southwest Airlines	1	2	-50.0%	1	2	-50.0%
UPS	0	0		0	0	
<b>Subtotal 10PM-11PM</b>	<b>35</b>	<b>48</b>	<b>-27.1%</b>	<b>35</b>	<b>48</b>	<b>-27.1%</b>
<b>11PM- 7AM Activity</b>	<b>2018</b>	<b>2017</b>	<b>Change</b>	<b>2018</b>	<b>2017</b>	<b>Change</b>
American/Mesa/SkyWest Airlines	1	2	-50.0%	1	2	-50.0%
Delta/SkyWest Airlines	1	2	-50.0%	1	2	-50.0%
FedEx	0	0		0	0	
JetBlue Airways	31	31	0.0%	31	31	0.0%
Southwest Airlines	0	4	-400.0%	0	4	-400.0%
UPS	0	0		0	0	
<b>Subtotal 11PM-7AM</b>	<b>33</b>	<b>39</b>	<b>-15.4%</b>	<b>33</b>	<b>39</b>	<b>-15.4%</b>
<b>TOTAL</b>	<b>68</b>	<b>87</b>	<b>-21.8%</b>	<b>68</b>	<b>87</b>	<b>-21.8%</b>

Notes:

2.2% (68 of 3,128) of total commercial operations occurred between 10pm - 7am.

2.2 flights - Nightly average for all late night (10:00 PM—7:00 AM) commercial flights, includes unanticipated delays.

1.1 flights - Nightly average for commercial flights after 11 PM.

Of the 68 Late-Night Operations, 24% were due to poor weather conditions, 22% were due to maintenance issues, 19% were due to staffing-related issues, 12% were due to air traffic control conditions, 9% occurred during the 5-minute grace period, 7% were due to unknown reasons, 4% were due to fueling-related issues, 2% were due to the operation of ferry flights and 2% were due to delayed airline dispatch release.

<b>AIRPORT NOISE VIOLATIONS</b>						
<b>LGB Current Month &amp; Calendar Year-To-Date Statistics</b>						
<b>January 2018</b>						
<b>January</b>				<b>CY-T-D 2018</b>		
<b>Air Carrier Noise Violations</b>	<b>2018</b>	<b>2017</b>	<b>Change</b>	<b>2018</b>	<b>2017</b>	<b>Change</b>
American/Mesa Airlines	1	0	100.0%	1	0	100.0%
Delta/SkyWest Airlines	1	1	0.0%	1	1	0.0%
FedEx	0	0		0	0	
JetBlue Airways	35	27	29.6%	35	27	29.6%
Southwest Airlines	0	2	-200.0%	0	2	-200.0%
UPS	0	0		0	1	-100.0%
<b>Subtotal</b>	<b>37</b>	<b>30</b>	<b>23.3%</b>	<b>37</b>	<b>30</b>	<b>23.3%</b>
<b>Commuter Noise Violations</b>	<b>2018</b>	<b>2017</b>	<b>Change</b>	<b>2018</b>	<b>2017</b>	<b>Change</b>
American/SkyWest Airlines	0	0		0	0	
Delta/SkyWest Airlines	0	0		0	0	
<b>Subtotal</b>	<b>0</b>	<b>0</b>		<b>0</b>	<b>0</b>	
<b>Non-Commercial Noise Violations</b>	<b>2018</b>	<b>2017</b>	<b>Change</b>	<b>2018</b>	<b>2017</b>	<b>Change</b>
All GA, Charter & Other	10	17	-41.2%	10	17	-41.2%
<b>TOTAL</b>	<b>47</b>	<b>47</b>	<b>0.0%</b>	<b>47</b>	<b>47</b>	<b>0.0%</b>
<b>Monetary Fines</b>	<b>2018</b>	<b>2017</b>		<b>2018</b>	<b>2017</b>	
Airport Surcharges	\$2,500	\$1,700		\$2,500	\$1,700	
Consent Decree	\$174,000	\$144,000		\$174,000	\$144,000	
<b>TOTAL</b>	<b>\$176,500</b>	<b>\$145,700</b>		<b>\$176,500</b>	<b>\$145,700</b>	

<b>AIRPORT OPERATIONS</b>						
<b>LGB Current Month &amp; Calendar Year-To-Date Statistics</b>						
<b>January 2018</b>						
<b>January</b>				<b>CY-T-D 2018</b>		
<b>Airport Operations (FAA)</b>	<b>2018</b>	<b>2017</b>	<b>Change</b>	<b>2018</b>	<b>2017</b>	<b>Change</b>
Air Carrier + Commuter Carriers	3,128	2,926	6.9%	3,128	2,926	6.9%
Air Taxi + General Aviation	22,145	20,253	9.3%	22,145	20,253	9.3%
Military Operations	132	86	53.5%	132	86	53.5%
<b>Total Aircraft Operations</b>	<b>25,405</b>	<b>23,265</b>	<b>9.2%</b>	<b>25,405</b>	<b>23,265</b>	<b>9.2%</b>

Notes:

0.2% (47 of 25,405) of the Airport's total aircraft operations (Commercial & GA) resulted in an aircraft noise violation.

1.2% (37 of 3,128) of the Airport's Commercial operations (Commercial & Commuter) resulted in an aircraft noise violation.

# AIRCRAFT NOISE VIOLATORS

## January 2018

OWNERNAME	DATE	TIME	A/D	RWY	FLIGHT #	A/C TYPE	ORIG/DEST	SEL	LIMIT	STATUS
JetBlue Airways	1/1/2018	0:05:02	A	30	JBU1925	A320	SJC	93.7	79.0	VIO + Alt Enf
JetBlue Airways	1/1/2018	0:12:51	A	30	JBU1417	A320	AUS	94.3	79.0	VIO + Alt Enf
JetBlue Airways	1/1/2018	0:18:32	D	30	JBU726	A320	SJC	88.7	79.0	VIO + Alt Enf
JetBlue Airways	1/1/2018	0:31:34	D	30	JBU14	A320	JFK	92.8	79.0	VIO + Alt Enf
JetBlue Airways	1/1/2018	0:37:28	D	30	JBU504	A320	BOS	92.2	79.0	VIO + Alt Enf
JetBlue Airways	1/1/2018	1:26:21	D	30	JBU1822	A320	PDX	93.5	79.0	VIO + Alt Enf
JetBlue Airways	1/1/2018	1:35:08	A	30	JBU679	A320	LAS	93.3	79.0	VIO + Alt Enf
JetBlue Airways	1/1/2018	22:59:25	A	30	JBU405	A320	BOS	93.5	90.0	VIO
Business Aviation Consultants Inc	1/3/2018	17:06:35	D	25R		BE55		94.3	92.0	VIO
JetBlue Airways	1/3/2018	23:25:28	A	30	JBU943	A320	FLL	94.3	79.0	VIO + Alt Enf
Air Methods Corporation	1/4/2018	22:27:14	A	30		HELI		92.1	90.0	VIO
JetBlue Airways	1/4/2018	23:17:05	A	30	JBU943	A320	FLL	94.7	79.0	VIO + Alt Enf
319MB LLC	1/4/2018	23:20:01	A	30		BE9L		84.2	79.0	VIO
JetBlue Airways	1/5/2018	22:07:10	D	30	JBU504	A320	BOS	95.1	90.0	VIO
JetBlue Airways	1/5/2018	22:23:43	A	30	JBU405	A320	BOS	94.1	90.0	VIO
JetBlue Airways	1/6/2018	0:30:41	A	30	JBU1013	A320	JFK	93.4	79.0	VIO + Alt Enf
JetBlue Airways	1/6/2018	0:46:19	A	30	JBU943	A320	FLL	93.2	79.0	VIO + Alt Enf
Sun Air Jets	1/6/2018	5:32:09	A	30		C750		86.6	79.0	VIO
JetBlue Airways	1/7/2018	0:47:19	A	30	JBU943	A320	FLL	93.8	79.0	VIO + Alt Enf
JetBlue Airways	1/7/2018	0:52:10	A	30	JBU1417	A320	AUS	94.4	79.0	VIO + Alt Enf
JetBlue Airways	1/7/2018	1:39:52	A	30	JBU405	A320	BOS	93.7	79.0	VIO + Alt Enf
JetBlue Airways	1/7/2018	3:47:14	D	30	JBU1822	A320	PDX	88.6	79.0	VIO + Alt Enf
Delta Air Lines / SkyWest Airlines	1/7/2018	23:05:04	A	30	SKW4645	CRJ9	SLC	91.5	79.0	VIO
JetBlue Airways	1/7/2018	23:29:28	D	30	JBU726	A320	SJC	93.4	79.0	VIO + Alt Enf
JetBlue Airways	1/7/2018	23:33:32	A	30	JBU679	A320	LAS	93.6	79.0	VIO + Alt Enf
JetBlue Airways	1/8/2018	0:30:02	A	30	JBU365	A320	SMF	93.2	79.0	VIO + Alt Enf
JetBlue Airways	1/8/2018	1:43:51	D	30	JBU6144	A320	FLL	90.0	79.0	VIO + Alt Enf
JetBlue Airways	1/8/2018	2:03:48	A	30	JBU1635	A320	SFO	94.4	79.0	VIO + Alt Enf
JetBlue Airways	1/8/2018	22:59:35	A	30	JBU405	A320	BOS	93.0	90.0	VIO
JetBlue Airways	1/9/2018	0:49:26	A	12	JBU179	A320	LAS	95.5	79.0	VIO + Alt Enf

# AIRCRAFT NOISE VIOLATORS

## January 2018

OWNERNAME	DATE	TIME	A/D	RWY	FLIGHT #	A/C TYPE	ORIG/DEST	SEL	LIMIT	STATUS
JetBlue Airways	1/9/2018	0:53:00	A	12	JBU679	A320	LAS	95.4	79.0	VIO + Alt Enf
JetBlue Airways	1/9/2018	1:10:05	A	12	JBU943	A320	FLL	96.8	79.0	VIO + Alt Enf
JetBlue Airways	1/9/2018	1:40:41	D	12	JBU1436	A320	SFO	90.1	79.0	VIO + Alt Enf
JetBlue Airways	1/9/2018	23:21:57	D	30	JBU944	A320	FLL	94.2	79.0	VIO + Alt Enf
JetBlue Airways	1/9/2018	23:43:42	D	30	JBU1436	A320	SFO	88.7	79.0	VIO + Alt Enf
JetBlue Airways	1/10/2018	0:03:25	A	30	JBU679	A320	LAS	93.2	79.0	VIO + Alt Enf
American Airlines	1/10/2018	23:33:48	A	25R	ASH5965	CRJ9	PHX	90.5	n/a	VIO
JetBlue Airways	1/12/2018	22:22:19	A	30	JBU943	A320	FLL	93.0	90.0	VIO
JetBlue Airways	1/12/2018	23:49:33	D	30	JBU944	A320	FLL	95.2	79.0	VIO + Alt Enf
McColee Partners LLC	1/16/2018	0:25:36	A	30		G150		88.9	79.0	VIO
JetBlue Airways	1/22/2018	22:08:01	D	30	JBU14	A320	JFK	95.4	90.0	VIO
125GH LLC	1/23/2018	23:31:05	A	30		GLF5		89.7	79.0	VIO
G200 LLC	1/23/2018	23:35:05	A	30		GALX		88.5	79.0	VIO
Delta Aviation LLC	1/24/2018	23:55:17	A	30		H25B		89.4	79.0	VIO
Kingston Aviation LLC	1/26/2018	0:45:33	A	30		BE40		90.7	79.0	VIO
JetBlue Airways	1/27/2018	1:33:34	A	30	JBU943	A320	FLL	92.7	79.0	VIO + Alt Enf
Jet Select LLC	1/31/2018	0:00:13	A	30		GLF4		88.2	79.0	VIO

**DEFINITIONS:**

**A/C Type** — Aircraft Type

**RWY** — Runway

**A/D/G** — Arrival / Departure / Ground Operation

**SEL** — SENEL — Single Event Noise Exposure Level (dBA)

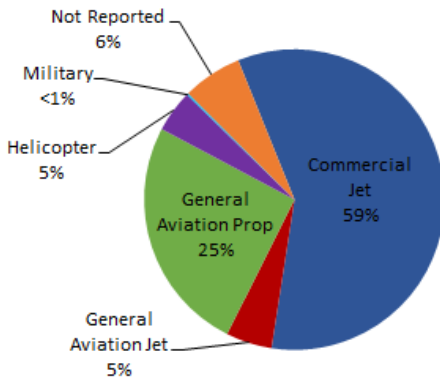
**ALT ENF** — Alternative Enforcement

**VIO** — Violation

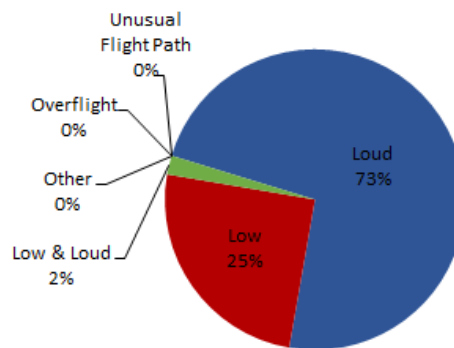
# LGB AIRCRAFT NOISE COMPLAINTS

## January 2018

### Complaints by Aircraft Types



### Complaints by Concern



### Complaints by Zip Code<sup>1</sup>

Zip Code	Complaints	Units
90505	1	1
90630	1	1
90712	4	3
90713	4	2
90740	2	1
90803	1	1
90805	63	4
90806	1	1
90807	41	12
90808	351	3
90815	4	3
92612	36	1
92626	533	3
92647	124	5
92648	149	9
92649	562	16
92677	1	1
Not Reported	2	2
<b>Grand Total</b>	<b>1,880</b>	<b>69</b>

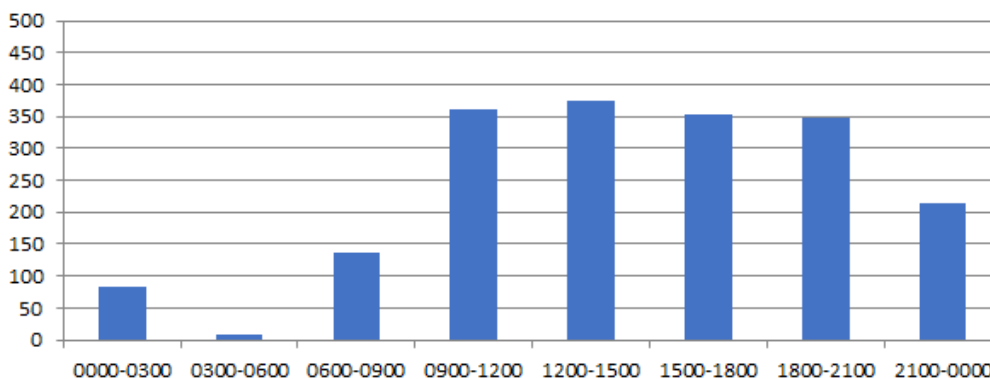
### Long Beach Residents' Helicopter Complaints Submitted to FAA<sup>2</sup>

Zip Code	Individual Complaints	Number of Individuals	Anonymous Complaints	Total Complaints
90802	2	1	8	10
90803	305	8	45	350
90804	2	1	0	2
90808	0	n/a	6	6
90814	6	2	75	81
<b>Grand Total</b>	<b>315</b>	<b>12</b>	<b>134</b>	<b>449</b>

<sup>1</sup> These data include data submitted directly to Long Beach Airport and does not include data submitted to FAA.

<sup>2</sup> These data reflect helicopter noise complaints submitted directly to FAA.

### Complaints by Time



**[THIS PAGE INTENTIONALLY LEFT BLANK]**



# long beach airport



## Long Beach Airport

4100 E. Donald Douglas Drive, Long Beach, CA 90808

[www.lgb.org](http://www.lgb.org) • [lgbapt@longbeach.gov](mailto:lgbapt@longbeach.gov)

Administration • (562) 570-2619